

*Botanical* INTERESTS®  
HIGH-QUALITY SEED

# Varieties Guide

*Sell exclusive varieties  
through our*

## Online Partnership Program

*see pg 56 for available varieties*

Easy, Convenient  
**Reorder  
Online**

*Pick from the whole line with  
no minimum quantity per variety  
see inside the front cover for details*

**NEW**  
**Calendar Displays**  
*for your store's gift department  
pg 28*



**600+ seed varieties**  
**230+ certified organics**  
**350+ heirlooms**

# Convenient online reordering!

When you are ready to reorder seed, Botanical Interests makes it easy.

[www.biorders.com](http://www.biorders.com)



- **Get reorders done quickly and reliably.**
- **Less paper; more "green" way to reorder.**
- **No minimum quantity per variety. Reorder in "eaches"!**
- **Pick from the whole line regardless of what you currently carry.**
- **Reorders typically ship in 1-2 days.**

## Simple steps to place your reorder:

- 1 Go to [www.biorders.com](http://www.biorders.com)**
- 2 In the username box type your customer ID.**  
This can be found at the top corner of every invoice and packing list.
- 3 Select "Place Reorders" from the main navigation.**
- 4 You MUST enter your name, email address and phone number. Provide PO# as well, if required by your store.**  
Enter your quantities per variety.
- 5 Click "Save Order Progress" after completing each section.**
- 6 Click "Save and Continue" to proceed to summary page.**
- 7 Click "Submit Reorder".**
- 8 An email confirmation will be sent upon order receipt.**

*If you have not set your payment terms for the 2023 season (begins July 5, 2022), you must complete, sign, and fax/email the 2023 Initial Order Form and Payment Terms and Conditions Form to us prior to being able to reorder online.*

## Order in time for your busy weekend!

### FedEx ship times

Shipping days for orders received by noon MST.

- 1 day
- 2 days
- 3 days
- 4 days\*

Reorders typically ship in 1-2 days.

\* Call about orders to Alaska and Hawaii.  
1-800-485-2647



**AMARANTH***Amaranthus tricolor*  
Frost sensitive**Edible Red Leaf**

A nutritious, heat-loving summer green, that also produces high-protein seeds. Eat fresh in salads or steam like spinach. Also decorative in flower beds.

H • 49–63 days

#0146 \$2.29 500mg (~800 seeds)

**ARTICHOKE***Cynara scolymus*  
Frost tolerant**Green Globe Improved**

Delicious artichokes really can be grown in any climate. The large, silvery leaves and bright purple flowers are beautifully ornamental, too.

150–180 days

#0267 \$2.29 18 seeds

**ARUGULA | ROCKET***Eruca vesicaria*  
Frost tolerant

The flavor of arugula will add spice to any salad; but an all-arugula salad will please any rocket lover. Delicious!

H • 20–45 days

#3041 Organic \$1.99  
1g (~400 seeds)#7612 Organic Large \$4.59  
3g (~1,210 seeds)**Astro**

'Astro' has stellar qualities! Slower-to-bolt, wider leaves, and a milder flavor when young all make for a real winner. An excellent cut-and-come-again crop.

32–55 days

#3101 Organic \$2.99  
750mg (~300 seeds)**ARUGULA | WILD ROCKET***Diplotaxis tenuifolia*  
Frost tolerant

Wild arugula, with complex, savory flavor excites the palate when added to salads, sandwiches, and even pesto.

H • 30–50 days

#0298 \$1.99 500g  
(~1,680 seeds)**Rocky**

Walk on the wild side! Complex, spicy flavor and very easy to grow from seed.

H • 30–50 days

#3029 Organic \$2.49  
500mg (~1,680 seeds)**BEAN***Phaseolus vulgaris* (unless noted)  
Frost sensitive (unless noted)**Bush****Blue Lake 274**

Renowned favorite with exceptional flavor and tenderness; one of the best varieties for freezing.

H • 58 days • DR

#0004 Conventional \$2.49  
25g (~60 seeds)#3134 Organic \$3.49  
20g (~48 seeds)**Contender**

Wow—fresh beans in only 50 days! Delicious, intense flavor and tenderness. So easy to grow. A real knock out!

H • 50 days • DR

#3034 Organic \$3.49  
20g (~48 seeds)**Ferrari**

Sleek and slim as a sports car! These slender, crisp and delicious pods are fuzz-free, glossy and smooth to the touch. Heavy bean producer.

63 days • DR

#0300 \$2.99 15g (~60 seeds)

**French Filet**

Wonderfully delicate flavor, even when picked very young. These gourmet beans are perfect steamed or sautéed.

58 days

#0228 \$2.49 20g (~80 seeds)

**Gold Rush**

Large crops of delicious golden pods known for holding their tender texture and delicate flavor longer than other snap beans.

54 days • DR

#0049 Conventional \$2.69  
25g (~80 seeds)

#3139 Organic \$2.99 15g (~60 seeds)



**Jade**

Dark green like the polished gemstone, these pods are sweet and tender on super-productive plants. A premium bean, fresh from the garden.

55 days • DR

#3116 Organic \$2.99

20g (~65 seeds)

#7382 Large \$5.59 50g (~160 seeds)

**New Large Packet**

**Provider**

Like its name suggests, this plant provides a large harvest! Upright plants make it easy to reach right in and grab a handful of beans. Great flavor!

H • 50 days • DR

#7618 Organic Large \$5.59

50g (~120 seeds)

**Roma II**

Classic Italian Romano bean on easy-to-pick bush plants. Beautiful flat green pods are filled with robust flavor.

58 days • DR

#3117 Organic \$3.49

25g (~60 seeds)

**Royal Burgundy**

Bright, violet-purple pods magically turn an emerald green after cooking! Tender and stringless.

55 days • DR

#0227 Conventional \$2.49

25g (~60 seeds)

#3108 Organic \$2.99

15g (~36 seeds)

**Tavera**

A true gourmet French "filet" bean produced for the French restaurant trade. Slender, exquisitely tender and stringless.

54 days • DR

#3082 Organic \$3.49

12g (~60 seeds)

**Trio**

This trio of bush beans was chosen for flavor, productivity, reliability, and hardiness. A colorful combination for creative cooking that's also ideal for canning and freezing!

45-55 days • DR

#7302 Large \$4.59

60g (~140 seeds)

**Bush, Cowpea**

*Vigna unguiculata*

**California Blackeye #5**

A home garden favorite and the most popular Southern cowpea. Large, smooth seed mostly eaten fresh but can also be dried, or enjoy whole, young pods fresh.

H • 75 days • DR

#0094 \$2.69 25g (~100 seeds)

**Pinkeye Purple Hull**

Harvest a plentiful crop of beautiful dark purple pods filled with "pink-eyed" southern peas. Delicious and nutritious, fresh or dried.

62-90 days

#0261 \$2.69 25g (~100 seeds)

**Fava**

*Vicia faba*

Frost tolerant

**Windsor**

This 1863 heirloom, broad fava has delectable, nutty, bean/pea flavor. Easy to shell, and delicious raw or cooked. So much better fresh than dried! Also an excellent cover crop.

H • 75 days

#7305 Large \$4.59

35g (~18 seeds)

**Pole****Blue Lake FM-1K**

This long-time favorite has delicious full-bodied flavor. Heavy yields ensure plenty for freezing or canning to enjoy in the off-season!

H • 66 days • DR

#3020 Organic \$2.69

15g (~48 seeds)

#7322 Large \$5.59 60g (~190 seeds)

**Kentucky Wonder**

There's a reason this old bean is still a favorite! This heavy producer has excellent flavor and tender pods.

H • 63 days • DR

#0117 \$2.69 25g (~40 seeds)

**Trionfo Violetto**

The slim, purple pods of this Italian favorite are a delicacy, and beautiful in the garden, too. Hard to find in grocery stores.

H • 64-75 days

#0214 \$2.69 10g (~24 seeds)



**Seychelles** NEW

Deep green, stringless pods are as straight as a canoe you'd find on the waters surrounding the Seychelles islands. This 2017 award winner is disease resistant. Long vines produce early and continue all summer!

55–60 days • DR  
#7600 Organic Large \$6.29  
40g (~160 seeds)

**Pole Runner**

*Phaseolus coccineus*

**Scarlet Emperor**

Large sprays of brilliant, rich-red flowers and sweet tasty pods. Attracts hummingbirds and pollinators.

H • 75 days  
#0244 \$2.99 25g (~20 seeds)

**Pole Yard Long**

*Vigna unguiculata*

**Orient Wonder**

These 18"-long beans are totally amazing. Rounded, deep green, and tender, stir-fry or steam as you would a snap bean.

80 days  
#0246 \$3.49 20 seeds

**BEET**

*Beta vulgaris*  
Frost tolerant

**Bull's Blood**

Add bright color and nutrition to your salad with the beautiful, deep red leaf tops and the dark red, tender roots.

50–60 days  
#0222 \$2.69 3g (~75 seeds)

**Chioggia**

'Chioggia' is the candystripe beet. When cut, beautiful red and white interior rings are revealed that look like peppermints!

H • 55 days  
#3150 Organic \$3.49  
2g (~130 seeds)

**Detroit Dark Red**

The standard for beets since 1892. Tender, buttery-sweet, nutritious root vegetable. Foliage is a tasty green, packed with iron!

H • 60 days  
#3074 Organic \$2.69  
2.5g (~100 seeds)

**Early Wonder**

Classic beets in just 48 days, and 'Early Wonder's' tops are considered the best beet greens.

H • 48 days  
#3014 Organic \$2.69  
2g (~90 seeds)

**Golden Boy**

Golden-orange roots are firm, earthy, mild, and deliciously sweet. Beet greens are also superb.

65–70 days  
#0302 \$3.49 1g (~110 seeds)

**Gourmet Blend**

The old-fashioned beet is here to stay! Create gourmet salads and side dishes in a rainbow of jewel-tone colors. Sweet, nutritious, easy to grow.

H • 65 days  
#0174 Conventional \$2.49  
2.5g (~155 seeds)  
#3132 Organic \$2.99  
1.5g (~95 seeds)  
#7613 Organic Large \$5.59 4g (~250 seeds)

**Touchstone Gold**

Milder than red beets, with a sweet flavor, these vibrant yellow roots set the gold standard that can't be "beet".

85–90 days  
#3028 Organic \$4.29  
750mg (~30 seeds)

**BOK CHOY**

*Brassica rapa* subsp. *chinensis* (unless noted)  
Frost tolerant

**Baby Choi**

Soft leaves and crunchy, white stems have a very mild flavor. Makes a beautiful, single-serving presentation harvested when small.

35–60 days  
#3031 Organic \$2.69  
700mg (~170 seeds)

**Choko (hybrid)** NEW

'Choko' baby bok choy is heat-tolerant with perfect, vase-shaped uniformity. Features delicate, crisp, and pleasantly mild-flavored leaves.

50–55 days  
#0136 \$2.29 300mg (~135 seeds)

**key**

H=Heirloom DR=Disease Resistance ID=Intermediate Day (onion) Det.=Determinate (tomato)  
N=Native LD=Long Day (onion) SD=Short Day (onion) Semi-det.=Semi-determinate (tomato)

**Toy Choy** (hybrid)

All the flavor and crispness of standard varieties in a smaller package. Tolerates warm weather better than full-size types.

30–35 days

#0247 \$2.99 150mg (~65 seeds)

**Tatsoi****Rosette**

*Brassica rapa* subsp. *narinosa*  
Not only an heirloom, but an ancient vegetable! Great for salads and stir-fries. Also known as "spoon mustard" because of the leaf shape.

H • 45 days

#3033 Organic \$2.29 700mg (~305 seeds)

**BROCCOLI**

*Brassica oleracea* var. *italica*

Frost tolerant

**Belstar** (hybrid)

'Belstar' is truly a star in any climate! This widely-adapted, compact broccoli handles heat stress better than most, and delivers great side-shoot production.

65–70 days

#3181 Organic \$3.49 25 seeds

**Burgundy** (hybrid)

Broccoli has never been so beautiful! 'Burgundy' is quick to produce and continues tender side-shoot production for a long harvest period.

68–75 days

#0082 \$4.29 10 seeds

**Di Cicco**

Introduced in 1890, this delicious, reliable Italian heirloom produces an abundance of small to medium florets.

H • 48 days

#3056 Organic \$2.49  
1.5g (~415 seeds)

**Waltham 29**

The ancient Romans loved broccoli for its flavor. Today we know it's packed with nutrition, too. Health food straight from the garden.

H • 75 days

#0221 \$1.99 2g (~480 seeds)

**BROCCOLI RAAB**

*Brassica rapa* subsp. *rapa*

**Rapini**

Known as Italian broccoli, Rapini has delicate, tender shoots with a peppery flavor and edible leaves. No wonder it's so popular in Europe!

H • 45 days

#3040 Organic \$2.69 1g (~280 seeds)

**BRUSSELS SPROUTS**

*Brassica oleracea* var. *gemmifera*

Frost tolerant

**Long Island Improved**

Grown since the 1890s, still the most popular variety planted. The tasty gems are in high demand at restaurants!

H • 85–110 days

#0208 \$1.99 1g (~140 seeds)

**CABBAGE**

*Brassica oleracea* (unless noted)

Frost tolerant

**Copenhagen Market**

Superior cabbage that has stood the test of time. Compact heads bring classic cabbage flavor to coleslaw, salad, sauerkraut, or cooked dishes.

H • 65–80 days

#0009 \$1.99 1.5g (~360 seeds)

**Red Acre**

Delicious leaves add brilliant jeweled color to salads and cooked dishes. Best red cabbage for storage.

75–100 days

#3030 Organic \$2.49 1.5g (~360 seeds)

**Napa**

*Brassica rapa* subsp. *pekinensis*

**One Kilo Slow Bolt** (hybrid)

Quick and easy to grow with a mild sweet flavor compared to Western head cabbage. Delicious in salads, stir-fries, or wraps.

50–55 days

#0276 \$2.69 300mg (~80 seeds)

**CARROT**

*Daucus carota*

Frost tolerant

**Atomic Red**

Growing carrots is a blast with this nutritious, high lycopene carrot that intensifies in color and sweetness after cooking!

70–75 days

#0278 \$2.99 700mg (~360 seeds)

**key**

H=Heirloom

DR=Disease Resistance

ID=Intermediate Day (onion)

Det.=Determinate (tomato)

N=Native

LD=Long Day (onion)

SD=Short Day (onion)

Semi-det.=Semi-determinate (tomato)

**Calliope Blend**

What fun to grow colorful carrots! Kids and adults alike will eagerly anticipate the harvest of these nutritional, flavorful roots.

65–75 days

#0255 \$2.69 700mg (~360 seeds)

**Carnival Blend**

A colorful surprise in the garden and on the table, this fun mix is high in nutrition. Harvest at 3"–4" for delightful baby carrots.

65–75 days

#3115 Organic \$3.49  
500mg (~250 seeds)

**Cosmic Purple**

Out of this world! Dazzling purple conceals the beautiful orange, crunchy interior loaded with sweet flavor.

70 days

#0206 \$2.69 700mg (~360 seeds)

**Danvers 126**

In addition to classic flavor, 'Danvers 126' is excellent in heavy soils and is resistant to cracks and splits.

H • 65 days

#3016 Organic \$2.69  
1g (~510 seeds)

#7614 Organic Large \$5.59  
3g (~1,520 seeds)

**Little Finger**

A true mini-carrot, fun for kids of all ages! Developed to have deep orange color and sweet flavor when harvested small.

H • 57 days

#3105 Organic \$2.49  
750mg (~380 seeds)

**Rainbow (hybrid)**

A beautiful array of carrots all from one type of seed! Since this is one cultivar, these carrots mature at the same size and have the same shape, making them easy to process and oh-so-pretty pickled in a jar!

67 days

#0015 \$3.49 400mg (~200 seeds)

**Red Cored Chantenay**

This excellent Chantenay type is crisp and sweet with rich, reddish-orange color. An 1800s French heirloom enjoyed in the U.S. since 1929.

H • 65–70 days

#0277 \$2.29 1g (~510 seeds)

**Scarlet Nantes**

This old standard has a reputation for sweet flavor and crisp texture. Deep orange 6"–7" long roots.

H • 65 days

#3017 Organic \$2.49  
800mg (~410 seeds)

**Shin Kuroda**

This heat-resistant, high-moisture, deep orange carrot is one of the sweetest, ever! Great for storage; excellent for dense soils.

75 days

#0119 \$2.29 1g (~510 seeds)

**Tonda di Parigi**

Sweet and petite! This 19th century Parisian favorite is the perfect snack size. Shallow roots grow well in heavy soils and containers.

H • 65 days

#0011 \$2.29 800mg  
(~410 seeds)

**CAULIFLOWER**

*Brassica oleracea* var. *botrytis*  
Frost tolerant

**Romanesco**

This intriguing Italian heirloom delights with spirals of delicious lime green towers that will inspire even a finicky eater to try it.

H • 75–100 days

#0235 \$1.99 1g (~240 seeds)

**Snowball Y**

Early maturing, 6" snow-white heads that can be harvested over a long period of time. Well-suited for short seasons.

70–80 days

#3183 Organic \$2.49  
750mg (~180 seeds)

**CELERY**

*Apium graveolens*  
Frost tolerant

**Utah**

Garden fresh celery is crisp, juicy, and flavorful. Leafy tops are delicious in soups.

H • 100–120 days

#3146 Organic \$2.29  
350mg (~560 seeds)



**CHINESE BROCCOLI KILAIAN***Brassica oleracea* var. *alboglabra*  
Frost tolerant

Similar to broccoli, but with sweeter, more succulent flavor and better heat tolerance. Tender leaves, stalks, and florets.

60–70 days

#0124 \$2.29 750mg (~140 seeds)

**COLLARDS***Brassica oleracea* var. *viridis*  
Frost tolerant**Georgia Southern**

Although traditional in Southern meals, the frost tolerance of this variety means you don't have to be in the south to grow it. Leaves make great sandwich wraps!

H • 50–80 days

#0016 \$2.49 3g (~580 seeds)

**CORN***Zea mays*  
Frost sensitive**Flint | Popcorn****Robust Pop R400MR** (hybrid)

Electric orange kernels pop to a large, preferred round shape for kettle corn and caramel corn.

95–100 days • DR

#0297 \$2.99 10g (~36 seeds)

**Strawberry**

These petite strawberry-shaped, ruby-red ears are a colorful and quaint addition to a fall cornucopia centerpiece.

H • 100–105 days

#0068 \$2.49 3g (~31 seeds)

**Ornamental  
Striped Japonica**

See pg 58

**Sweet****Buttergold** (se) (hybrid)

Deliciously sweet and ready to pick up to 2 weeks before other varieties. Great producer in all areas and extra hardy for northern areas.

63 days

#0249 Conventional \$2.69

10g (~55 seeds)

#7328 Large \$5.59 30g (~170 seeds)

**Honey and Cream** (su) (hybrid)

Get ready for summer barbecues! Bicolor kernels deliver great corn flavor and creamy texture in every bite. A true taste of summer. Great for canning and freezing, too!

84 days

#0050 Conventional \$2.99

10g (~50 seeds)

#7318 Large \$5.59

28g (~130 seeds)

**Martian Jewels** (su)

The sweet kernels of this unique variety are out of this world! Once the glowing, white kernels are devoured, deep-violet cobs are revealed. Grow as a sweet or flour corn.

80–90 days

#3180 Organic \$3.49

9g (~50 seeds)

**Painted Hill** (su)

Beautifully colored kernels burst in the mouth with delicious, mildly sweet flavor. Color intensifies when dried. No two ears are alike!

65–80 days

#3148 Organic \$3.49

8g (~38 seeds)

**Sugarbaby** (se) (hybrid)

An extra sweet, bicolor corn with plump, tender kernels that burst with sweet juiciness! Early to harvest, and longer-lasting sweetness.

65 days • DR

#0251 \$2.69 10g (~50 seeds)

**True Gold** (su)

Abundant, golden-yellow kernels with sweet, rich flavor. An open-pollinated selection from a 1955 variety.

70–80 days

#3004 Organic \$3.49

8g (~45 seeds)

**COVER CROP**

Frost tolerant (unless noted)

**Common Buckwheat***Fagopyrum esculentum*

Frost sensitive

Sow in spring or summer.

Buckwheat cover is green manure for healthier soil. Great for controlling annual and perennial weeds. Quick to mature.

30–40 days

#7606 Organic Large \$5.59 65g

(Sows ~165 sq. ft.)





**Crimson Clover**

*Trifolium incarnatum*

Sow in spring or fall.

A hardworking cover crop for your vegetable garden that fixes nitrogen for improved soil fertility. As an added bonus, the large, eye-catching, deep crimson flowers are beautiful and attract beneficial insects.

H • 70–90 days

#7280 Large \$4.59 40g

(Sows ~178 sq. ft.)



**Hairy Vetch**

*Vicia villosa*

Hairy vetch fixes copious amounts of nitrogen into the soil, improves the quality of the soil, and provides weed control with vigorous, dense growth. The flowers are a bonus for bees too!

H • 60 days

#7608 Organic Large \$5.59 40g (Sows ~60 sq. ft.)



**Soil Builder Peas and Oats**

*Pisum sativum, Avena sativa*

Sow in the spring or fall.

A dynamic duo of easy-to-grow field peas and oats that improves the garden's soil fertility and structure. Peas add nitrogen to the soil while fast-growing oats provide green manure.

50–70 days

#7609 Organic Large \$4.59

65g (Sows ~80 sq. ft.)



**Sweet Lorane Improved Fava**

*Vicia faba*

Sow in early spring or fall. Fava beans are a dual purpose cover crop, having one of the highest nitrogen-fixing rates, and the large, deep roots break up even heavy and compacted soil. Dainty white flowers with black centers attract beneficial insects. Cold tolerant.

30–60 days

#7617 Organic Large \$5.59 40g (Sows ~32 sq. ft.)



**CUCUMBER**

*Cucumis sativus* (unless noted)

Frost sensitive

**Armenian**

*Cucumis melo var. flexuosus*

This "cucumber" is technically a heat-tolerant melon! Even those who don't like cucumbers love its cool crunch and sweet flavor.

H • 65 days

#0021 \$2.49 2g (~45 seeds)



**Homemade Pickles**

Arguably the best cucumber available for pickles. Solid, crisp interior is perfect for 1 1/2"–6" pickles. Also great for salads!

55 days • DR

#3135 Organic \$2.69 1.5g (~42 seeds)



**Lemon**

This adorable cucumber looks like a lemon, eats like an apple! Sweet and crisp, mild flavor, delicious straight off the vine.

H • 65 days

#3099 Organic \$2.29

1g (~30 seeds)



**Marketmore**

This old garden favorite delivers plenty of crisp and delicious slicing cucumbers with unbeatable flavor for fresh salads all summer long.

H • 60 days • DR

#3123 Organic \$2.69

1.5g (~40 seeds)



**Poinsett 76**

This crisp, slicing cucumber performs well in all climates, including hot, humid areas, and has excellent disease resistance.

65 days • DR

#0280 \$2.29 2g (~55 seeds)



**Spacemaster 80**

A very compact, bushy plant that won't take over the entire garden. Great for pickles when small, and slicing when mature. Ideal for containers.

62 days • DR

#0020 \$2.49 2g (~45 seeds)



**Tasty Green (hybrid)**

Fresh, crisp, and juicy! This Japanese burpless cucumber has tender, mild skin and tiny seeds. Sure to inspire culinary creations!

60 days

#3062 Organic \$4.29 12 seeds



**Telegraph Improved**

Enjoy sweet, delicious English cucumbers at teatime, dinnertime, or any time! Long, slender, burpless fruits have thin, tender skin, few seeds, and are never bitter.

H • 60 days

#0257 \$2.69 20 seeds



**key**

H=Heirloom DR=Disease Resistance ID=Intermediate Day (onion) Det.=Determinate (tomato)  
 N=Native LD=Long Day (onion) SD=Short Day (onion) Semi-det.=Semi-determinate (tomato)

**Gherkin****Hokus**

Top choice for making sweet gherkin pickles! Also perfect for French cornichons (small, crisp dills). Quick to produce an abundance of tiny cukes.

60 days

#3127 Organic \$3.49  
(~20 seeds)

**EDAMAME**

*Glycine max*

Frost sensitive

**Chiba Green**

Oh, so snackable and packed with protein! Reliable, high yields of three-bean pods on this early-harvest variety.

60–70 days

#3178 Organic \$4.29 12g (~29 seeds)

**EGGPLANT**

*Solanum melongena*

Frost sensitive

**Black Beauty**

Very handsome 1- to 3-pound, glossy, deep purple fruits keep well and have exemplary flavor. Tender skin eliminates peeling.

H • 80 days from transplanting

#3045 Organic \$2.49  
500mg (~80 seeds)

**Long Purple**

Milder, more delicate flavor than other eggplant. Few seeds and thin skin also make it easy to cook; wonderful for grilling and frying!

H • 70–80 days from transplanting

#0132 Conventional \$2.49  
500mg (~100 seeds)

#3095 Organic \$2.99 300mg (~60 seeds)

**ENDIVE**

*Cichorium endivia*

Frost tolerant

**Olesh Tres Fine**

Turn any salad into a classy dish with endive's elegant, frilly leaves and mild flavor that add color, texture, and flair. Lovely addition to mesclun.

42–70 days

#3120 Organic \$1.99  
400mg (~230 seeds)

**FENNEL**

See pg 26

**KALE**

*Brassica oleracea* (unless noted)

Frost tolerant

**Dazzling Blue**

Vigorous plants of this exceptionally cold-hardy lacinato-type kale produce dazzling shades of green to purple with purple midribs.

30–60 days

#3079 Organic \$2.69  
1g (~150 seeds)

**Dwarf Blue Curled**

A gorgeous leaf vegetable, so nutritious and easy to grow. Delicious in soups, steamed, or stir-fried. Extremely cold tolerant.

H • 21–55 days

#3136 Organic \$2.69  
1g (~190 seeds)

**Nero Toscana**

This handsome, nutritious kale adds heartiness to soups, stews, and grain dishes. A little kiss from a light fall frost only makes it sweeter!

H • 21–62 days

#0151 Conventional \$2.29  
1g (~190 seeds)

#3100 Organic \$2.49  
1g (~190 seeds)

#7601 Organic Large \$4.59 3g (~770 seeds)

**Premier Blend**

*Brassica oleracea* and *Brassica napus*

Delicious blend of four kales—'Dwarf Blue Curled', 'Dwarf Siberian Improved', 'Nero Toscana' lacinato, and 'Red Russian'. Pick young as tender baby greens in just 25 days or grow to full-sized plants.

H • 25–55 days

#0134 Conventional \$2.29  
3g (~580 seeds)

#7317 Large \$4.59  
10g (~1,920 seeds)

**Red Russian**

*Brassica napus*

This striking variety makes beautiful, tender, and delicious baby greens. Spruce up your salads, pastas, and soups—yum!

H • 21–50 days

#3013 Organic \$2.49  
1g (~190 seeds)

**key**

H=Heirloom

DR=Disease Resistance

ID=Intermediate Day (onion)

Det.=Determinate (tomato)

N=Native

LD=Long Day (onion)

SD=Short Day (onion)

Semi-det.=Semi-determinate (tomato)

**KOHLRABI**

*Brassica oleracea* var. *gongylodes*  
Frost tolerant

**Purple Vienna**

Curiously shaped, this crisp, mildly sweet member of the cabbage family is splendid in salads, slaws, and stir-fries. A good source of nutrients.

H • 50–69 days

#3036 Organic \$2.29  
1g (~180 seeds)

**LEEK**

*Allium porrum*  
Frost tolerant

**King Richard**

The subtle onion flavor of this variety complements dishes without overpowering other flavors. Produces extra-long white stems early.

75 days

#3057 Organic \$2.69  
750mg (~210 seeds)

**LETTUCE**

*Lactuca sativa* (unless noted)  
Frost tolerant

**Butterhead****Buttercrunch**

Premium quality, tender European bibb lettuce with delicate flavor. Compact heads are bolt-resistant and easy to grow even in pots!

H • 21–65 days

#3052 Organic \$2.69  
1g (~730 seeds)

**Marvel of Four Seasons**

Delicate, buttery flavor in beautiful, cranberry-red leaves. Heat and cold tolerance for extended growing season.

H • 21–55 days

#3058 Organic \$2.69  
1g (~730 seeds)

**Crisphead****Ice Queen | Reine des Glaces**

Striking French heirloom with frilly leaves keeps its cool in warmer temperatures. Loose head with sweet, crisp leaves.

H • 21–62 days

#0305 \$2.29 1g (~680 seeds)

**Great Lakes 118**

Iceberg, fresh from the garden, adds crunch to salads and sandwiches. Also a nice baby green! Heat tolerant and bolt resistant.

H • 68–82 days

#0024 \$2.49 1g (~660 seeds)

**Leaf****Black Seeded Simpson**

A favorite of generations of gardeners because of its heat tolerance and fast growth. Consistently crisp and delicious!

H • 21–40 days

#3025 Organic \$2.69 1g (~660 seeds)

**Brentwood** NEW

Bright burgundy, glossy color, with a frilly texture. Compact heads with uniform leaves for one-cut salads.

21–57 days

#3184 Organic \$2.99 30 seeds

**Ezrilla** NEW

Green, compact leaves grow in uniform, short heads for one-cut salads. Can be harvested as baby greens or frilly head lettuce.

21–50 days

#3185 Organic \$2.99 30 seeds

**New Red Fire**

Frilly and rippled, this enticing red-tipped lettuce is heat tolerant, too. A beautiful accent in flower beds.

21–55 days

#3177 Organic \$2.69  
500mg (~180 seeds)

**Red Sails**

This fancy, buttery lettuce with ruffled burgundy-tinged leaves is a salad lover's dream. 1985 All-America Selections winner with a long harvest period and is heat tolerant.

20–45 days

#3103 Organic \$2.69 500mg (~270 seeds)

**Salad Bowl Blend**

A favorite for so many years! Salad Bowl is one of the most heat-tolerant leaf lettuces available.

H • 21–50 days

#3023 Organic \$2.69  
750mg (~600 seeds)  
#7615 Organic Large \$5.59  
3g (~2,400 seeds)



**Mesclun**

Assorted species

**Chef's Choice**

Our own custom, texture-filled salad blend of lettuce, arugula, mustard, and endive is easy to grow, and scrumptious to eat! Good container mix.

21–45 days

#0127 Conventional \$2.29

1.5g (~890 seeds)

#7301 Large \$4.59 4.5g (~2,660 seeds)

**Chef's Medley**

Bring an upscale salad to your table. Chosen by Chef John Platt of Boulder, Colorado, this mix of lettuce, arugula, mustard, and bok choy exhibits flavors, textures, and colors as varied as his cuisine.

20–45 days

#3024 Organic \$ 2.99 1.5g (~950 seeds)

**Farmer's Market Blend**

Begin harvesting this tantalizing, mild blend of six varieties of lettuce in just 3 weeks! Cut back plants and they will re-grow. Easy to grow in containers.

21–45 days

#0077 Conventional \$2.29

1.5g (~1000 seeds)

#7303 Large \$4.59 4.5g (~2,990 seeds)

**Gourmet Baby Greens**

Gourmet greens without the gourmet price. Our custom mix of lettuces have beautiful flavors and colors.

H • 21–45 days

#3125 Organic \$2.99 1g (~680 seeds)

#7605 Organic Large \$5.59

4g (~2,720 seeds)

**Mini-Romaine****Little Gem**

This mini romaine combines the wonderful flavor of butterhead with the crisp texture of romaine for one gem of a green!

H • 20–68 days

#3102 Organic \$2.49

500mg (~345 seeds)

**Truchas**

Mini-romaine lettuce with crisp, dark cherry leaves. Very reliable and pretty in containers or garden beds.

21–48 days

#3170 Organic \$2.99

30 seeds

**Romaine****Parris Island Cos**

Named for Parris Island off South Carolina, this old favorite romaine is crisp, sweet, and delicious as a baby green, midsize, or full-grown!

H • 21–68 days

#0220 Conventional \$2.29

2g (~1,330 seeds)

#3026 Organic \$2.99

1g (~660 seeds)

#7611 Organic Large \$6.29

4g (~2,660 seeds)

**Rouge d'Hiver**

A favorite known for pretty red color, crisp leaves, good flavor, and tolerance to cold and heat. Also makes a beautiful baby green.

H • 20–65 days

#3122 Organic \$2.49

750mg (~550 seeds)

**Vivian**

Tightly bunched heads with broad, crisp, dark green leaves. Bolt resistance and vigorous growth make it a dependable performer.

28–50 days

#3393 Organic \$2.99

1g (~857 seeds)

**MÂCHE | CORN SALAD***Valerianella locusta*

Frost tolerant

**Big Seeded**

Mildest flavor and softest texture of any salad green, with leaves so tender they "melt" in the mouth. Grows great in containers. Very cold tolerant.

H • 60 days

#0306 \$2.29 1.5g (~390 seeds)

**MELON***Cucumis melo* (unless noted)

Frost sensitive

**Charentais**

The favorite dessert melon of the French, and for good reason. Heavenly aroma, succulent, honey-sweet taste in a grapefruit-sized package. Too delicate for shipping; found only in home gardens.

H • 90 days

#0186 \$2.29 1g (~32 seeds)



**Hale's Best Jumbo**

Fabulous flavor! An old time favorite that is luscious and juicy. Grows and stays sweet in most climates. More drought tolerant than other melons.

H • 85 days

#3054 Organic \$2.49  
1g (~32 seeds)

**Hearts of Gold**

With an old-fashioned, sweet flavor, this 1890s heirloom favorite still wins taste tests. A short-season summer treat, homegrown melons are the best!

H • 80 days

#3012 Organic \$2.49  
1g (~32 seeds)

**Minnesota Midget**

Single-serving size of juicy, sweet 4" fruit right down to the rind! Small plants are perfect for containers. Excellent choice for short-season areas, though it can be grown anywhere.

H • 60–70 days • DR

#3141 Organic \$2.69  
1g (~34 seeds)

**Papaya Dew (hybrid)**

A unique melon! A delicious cross between several melons puts this in a tropical flavor class of its own!

70–90 days

#0262 \$4.29 8 seeds

**Sweet Delight**

Far surpassing store-bought honeydew melons, the wonderful, vine-ripened flavor of this sweet, juicy variety is a real delight!

90 days

#0155 \$2.69 1g (~26 seeds)

**Cucamelon**

*Melothria scabra*

**Mouse Melon**

Adorable little "watermelons" that taste like cucumbers are fun to grow. Eat fresh, pickle, or use as an olive substitute. Also known as Mexican sour gherkin.

H • 70 days

#0285 \$2.69 20 seeds

**MUSTARD**

*Brassica juncea* (unless noted)  
Frost tolerant

**Florida Broadleaf**

Not just for the South! Large leaves have a delightful, mildly spicy flavor packed with nutrition. Versatile in the kitchen.

H • 45–60 days

#0265 \$1.99 2g (~800 seeds)

**Gai Choy** **NEW**

A true Chinese mustard with robust mustard and peppery flavor. Curled leaves form a head with wide, crunchy stems.

40–60 days

#0135 \$2.29 300mg (~145 seeds)

**Mizuna**

*Brassica rapa* subsp. *nipposinica*  
Adapted over many years, this is the perfect mustard green for mescluns with a slight peppery flavor. Tolerates cold and heat. Also, commonly used as an ornamental.

H • 20–50 days

#3047 Organic \$1.99  
750mg (~330 seeds)

**Red Giant**

Not only is "Red Giant" one of the most delicious greens, but it's beautiful in the garden, too! Mature leaves provide a spicy, mustardy kick.

H • 20–40 days

#0131 \$1.99 2g (~670 seeds)

**MUSTARD SPINACH**

*Brassica rapa* subsp. *nipposinica*  
Frost tolerant

**Tendergreen**

Mustard spinach, or komatsuna, offers the best of both worlds—mustard and spinach flavors captured in tender, young leaves. Savor mature leaves for a spicy, mustardy "kick".

H • 30–60 days

#0268 \$1.99 3g (~1,200 seeds)

**key**

H=Heirloom

DR=Disease Resistance

ID=Intermediate Day (onion)

Det.=Determinate (tomato)

N=Native

LD=Long Day (onion)

SD=Short Day (onion)

Semi-det.=Semi-determinate (tomato)

**OKRA**

*Abelmoschus esculentus*  
Frost sensitive

**Clemson Spineless 80**

Spineless, early to mature, and productive plants that are so pretty that they can be used as ornamentals, too.

55 days

#0083 Conventional \$1.99 5g (~60 seeds)

#3078 Organic \$2.49 4g (~38 seeds)

**Red Burgundy**

Stunning color in the garden! Crimson pods and yellow flowers are prolific in the heat. Beautiful and edible.

55-60 days

#0263 \$2.29 5g (~70 seeds)

**ONION**

*Allium cepa* (unless noted)  
Frost tolerant

**Bulb****Cabernet** (hybrid)

Beautifully colored rings are crisp on sandwiches and sweet cooked into a jam. Early harvest and up to 6-month storage life.

ID • 100-110 days

#3174 Organic \$3.49 250mg (~50 seeds)

**Flat of Italy**

This small, flat, bright red Cipollini from Italy is a gourmand's delight, fresh or cooked. Quick to mature for an early harvest. 1" tall by 2"-3" wide, storage onion.

H • ID • 70 days

#0203 \$2.49 750mg (~170 seeds)

**Gabriella** (hybrid)

Large and sweet, this jumbo, storage onion is ideal for mild southern climates. Its mellow flavor enhances any garden-fresh meal.

SD • 160 days

#3027 Organic \$3.49  
250mg (~50 seeds)

**Red Amposta**

One of the best red onions for sweet flavor and large bulbs that store well after harvest. A great combination for the home gardener.

ID • 115 days

#0202 \$2.49 750mg (~130 seeds)

**Walla Walla**

Steeped in history, these seeds have traveled from Italy to Washington! This is one of the juiciest, sweetest onions. Very cold hardy.

H • LD • 100-125 days

#3172 Organic \$3.49  
500mg (~100 seeds)

**Yellow Granex PRR** (hybrid)

This onion is used by Georgia farmers to grow the famous Vidalia® onion. Top quality with classic sweet, mild flavor. Some folks eat them like apples!

SD • 110-160 days • DR

#0194 \$2.69 750mg (~190 seeds)

**Yellow Sweet Spanish Utah**

This large, extra sweet, yellow onion is mild with wonderful flavor for eating fresh or caramelized.

H • LD • 110-130 days

#0291 \$2.49 750mg (~180 seeds)

**Bunching/Scallion****Italian Red of Florence**

Lovely Italian onion with excellent flavor and attractive, dark red skin. A beautiful addition to an antipasto tray!

H • 60 days

#0147 \$2.49 1g (~200 seeds)

**Tokyo Long White**

*Allium fistulosum*

A Japanese favorite prized for long white stalks bursting with flavor. A versatile addition to fresh or cooked dishes.

65 days

#0218 \$2.49 1.5g (~480 seeds)

**White Lisbon**

Onion lovers can't resist the delicate stems and juicy sweet tops! Vigorous, reliable and very easy to grow from seed.

H • 60 days

#0031 Conventional \$2.49  
1.5g (~300 seeds)

#3152 Organic \$2.99 1g (~200 seeds)

**Shallot****Zebrune**

What a delight, French echalion, a cross between a shallot and an onion, fresh from the garden! Impressive size, too. This specialty shallot can only be grown from seed.

H • 100 days from transplanting

#0289 \$2.99 250mg (~70 seeds)

**key**

H=Heirloom

DR=Disease Resistance

ID=Intermediate Day (onion)

Det.=Determinate (tomato)

N=Native

LD=Long Day (onion)

SD=Short Day (onion)

Semi-det.=Semi-determinate (tomato)

**PARSNIP***Pastinaca sativa*  
Frost tolerant**All American**

Surprisingly delicious, long white roots have a sweet, nutty flavor, essential for hearty stews and roasts. Great storage through winter.  
H • 95–125 days  
#0201 \$1.99 1g (~340 seeds)

**Turga**

Vigorous and productive with sweet, nutty flavor. Store in the ground through the winter. Serve mashed, roasted, stir-fried, or raw!  
H • 100–110 days  
#3147 Organic \$2.49  
500mg (~170 seeds)

**PEA***Pisum sativum*  
Frost tolerant**Shelling****Green Arrow**

Sit, shell, and enjoy! Shelling peas are the ultimate experiential vegetable! Plump, 4" pods contain 8–11 wonderfully sweet peas.  
H • 65 days • DR  
#0037 \$2.49 25g (~100 seeds)

**Progress #9**

This old favorite provides dozens of plump, tender peas in spring and fall. Freeze extras for the winter.  
H • 58 days • DR  
#3010 Organic \$2.69  
15g (~36 seeds)

**Wando**

This pea keeps its cool but can also take the heat! Excellent choice for warm climates or for late sowing in any climate.  
H • 68 days  
#0192 \$2.49 25g (~80 seeds)

**Shelling Petite****Iona**

These baby peas pack full pea flavor! Sweet, tender peas grow on short plants, good for container gardening.  
68 days • DR  
#0303 \$2.49 20g (~110 seeds)

**Snap****Cascadia** NEW

Distinctively delicious! Bucket loads of perfect pods eaten whole, fresh in salads or as a snack, and cooked in stir-fries. Sow in late summer, too!  
60 days • DR  
#3218 Organic \$2.69  
15g (~48 seeds)

**Sugar Daddy**

Sweet, stringless pods are so delicious, they may never make it to the kitchen. Short vines produce plenty for snacking and cooking.  
62–75 days • DR  
#0054 Conventional \$2.49  
20g (~60 seeds)  
#7314 Large \$4.59  
50g (~160 seeds)

**Sugar Magnolia**

What a gorgeous, purple snap pea to embellish your crudité trays and bring an unexpected color to salads and stir-fries! The surprising color remains after cooking. 6'–7' vine.  
70 days  
#0012 \$4.29 14g (~39 seeds)

**Sugar Snap**

Award-winning, 6'–8' vines are filled with delectable, crisp, sweet pods for fresh snacks and delicious meals.  
70 days  
#3089 Organic \$2.69  
15g (~55 seeds)  
#7607 Organic Large \$5.59  
50g (~180 seeds)

**Snow****Oregon Sugar Pod II**

Plenty of delicious, flat-podded, stringless snow peas from short, disease-resistant vines for salads, snacks, and stir-fries.  
60 days • DR  
#0035 Conventional \$2.49  
25g (~60 seeds)  
#3072 Organic \$2.69  
15g (~36 seeds)



**PEPPER**

*Capsicum annuum* (unless noted)  
Frost sensitive

**Chile****Ancho/Poblano**

Called "poblano" as a fresh, green pepper, and "ancho" as a reddish-brown dried pepper. Mildly hot. The pepper for chiles rellenos and mole sauces. ¡Delicioso! 1,000–2,000 SHU (**Mild**)

H • 65–75 days  
from transplanting  
#0184 \$2.49 25 seeds

**Biquinho Red & Yellow Blend**

*Capsicum chinense*  
Colorful, glossy, Brazilian peppers with a unique shape are mild, tangy, and sweet, followed by a touch of heat. Great for pickling. 1,000–2,000 SHU (**Mild**)

72 days from transplanting  
#0074 \$2.49 25 seeds

**Cayenne Blend**

Turn up the heat by adding cayenne to your favorite chili or other spicy recipe. Peppers are colorful and festive when dried. 30,000–50,000 SHU (**Hot**).

68 days from transplanting  
#0166 \$2.49 25 seeds

**Early Jalapeño**

An abundance of flavorsome peppers come early on this sturdy plant. A standard for eating raw, pickled, or stuffed. 2,500–5,000 SHU (**Medium hot**).

H • 63 days  
from transplanting  
#3060 Organic \$2.69  
400mg (~55 seeds)

**Ghost / Bhut Jolokia**

*Capsicum chinense*  
For cuisine that's supernaturally fiery, the "ghost" pepper is the pepper to grow. One of the world's hottest! Over 1,000,000 SHU (**Fiery hot**).  
H • 100 days  
from transplanting  
#0273 \$2.99 15 seeds

**Habanero**

*Capsicum chinense*  
This is a hot one. Adds not only fire but a distinctive citrus flavor. Try a thin slice shaken in a margarita! 100,000–350,000 SHU (**Extremely hot**).

H • 100 days from transplanting  
#3068 Organic \$2.69 30 seeds

**Jalafuego (hybrid)**

Whopper poppers! These extra large, dark green jalapeño peppers are perfect for stuffing. Very productive plants! 4,000–6,000 SHU (**Medium hot**).

70 days from  
transplanting • DR  
#0269 \$4.29 10 seeds

**NuMex Joe E. Parker**

An 8" long, thick-walled, Anaheim-type pepper excellent for stuffing or roasting. Also used in New Mexico for dried pepper wreaths. Turns from green to red. Very productive. 500–2,500 SHU (**Mild**).

75 days from transplanting  
#0165 \$2.49 500mg (~55 seeds)

**NuMex Lemon Spice**

Jalapeño heat with a slight citrus flavor and sunny, yellow color add zest to pickled pepper jars or fresh plates. 2,500–5,000 SHU (**Medium hot**).

65 days from transplanting  
#3098 Organic \$3.49 20 seeds

**Santaka**

This Japanese pepper is zesty, pungent, and very hot! The plant is beautiful enough for containers or borders! 40,000–50,000 SHU (**Hot**).

H • 70–80 days  
from transplanting  
#0120 \$2.49 25 seeds

**Heat Index of Peppers  
in Scoville Heat Units (SHU)**

100–2,000	<b>Mild</b>
2,000–6,000	<b>Medium hot</b>
10,000–23,000	<b>Medium hot to hot</b>
23,000–40,000	<b>Hot</b>
40,000–125,000	<b>Very hot</b>
125,000–600,000	<b>Extremely hot</b>
600,000–1,000,000	<b>Fiery hot</b>



**Serrano**

This pepper's special flavor makes it one of the most popular chiles in Mexican cuisine. Preferred for pico de gallo. 10,000–20,000 SHU (**Medium hot to hot**).

H • 75–90 days  
from transplanting  
#0085 \$2.49 400mg  
(~75 seeds)

**Shishito**

Oil and salt plus grill equals delicious! Also known as Wrinkled Old Man, this Japanese favorite is mild and sweet with an occasional spicy kick. 50–200 SHU (**Mild**).

H • 60–75 days  
from transplanting  
#3092 Organic \$3.49 20 seeds

**Thai Hot**

This is the pepper to grow for the mouth-burning excitement of spicy Thai food. Delicious in curries, soups, and stir-fries. 50,000–100,000 SHU (**Very hot**).

H • 90 days  
from transplanting  
#0182 \$2.49 20 seeds

**Sweet****California Wonder**

Two colors on one plant! Crisp and flavorful, excellent for stuffing, roasting, grilling, or as a snack. Very productive plant.

H • 75 days from transplanting  
#3032 Organic \$2.49 30 seeds

**Golden Cal Wonder**

This large, glowing yellow pepper will dress up your stuffed pepper dinner, salads, or crudité tray. Thick-walled, crisp, and flavorful.

H • 62–75 days from transplanting  
#3009 Organic \$2.49 20 seeds

**Jimmy Nardello**

This Italian heirloom has sweet, rich flavor reminiscent of roasted apples. Excellent for frying or salsa; makes a wonderful paprika.

H • 80–90 days  
from transplanting  
#3081 Organic \$2.69 18 seeds

**Orange Sun**

Add some sunshine to kabobs, salads, or fajitas! 'Orange Sun' is a large, premium quality bell pepper that will light up both the garden and table.

75–80 days  
from transplanting  
#3088 Organic \$2.69  
20 seeds

**Purple Beauty**

Lustrous fruits with rich, purple exterior and lime-green interior are a striking addition to veggie trays. Compact, sturdy plants.

75 days from transplanting  
#0080 \$2.49 20 seeds

**Sweet Banana**

Classic, long, yellow sweet pepper. Ideal for pickling, but deliciously sweet fresh and in any number of cooked dishes!

H • 70 days  
from transplanting  
#3080 Organic  
\$2.69 20 seeds

**Sweet Bell Blend**

Three pepper cultivars in one packet! These sweet, flavorful peppers all start out green, but turn to brilliant yellow, intense orange, and bright red. Seeds are colored for easy identification.

68–85 days  
from transplanting • DR  
#0033 \$2.49 30 seeds

**POTATO**

*Solanum tuberosum*  
Frost sensitive

**Clancy (hybrid)**

Potatoes from seed? Yes! 'Clancy' boasts great texture and flavor and produces different shades from rose gold to red, all with a creamy-yellow interior.

85–110 days from transplanting  
#0002 \$4.29 12 seeds

**key**

H=Heirloom  
N=Native

DR=Disease Resistance  
LD=Long Day (onion)

ID=Intermediate Day (onion)  
SD=Short Day (onion)

Det.=Determinate (tomato)  
Semi-det.=Semi-determinate (tomato)

**PUMPKIN**

*Cucurbita maxima* (unless noted)  
Frost sensitive

**Atlantic Giant**

A ton of fun! 'Atlantic Giant' can produce pumpkins that are 200 pounds or more; sure to be a county fair ribbon winner. A spectacular Jack O'Lantern.

120 days

#0296 \$3.49 5 seeds

**Big Max**

Big pumpkins for big, round, smooth jack o'lanterns and other fall décor.

May reach 100 lbs; also good for pies and canning.

H • 120 days

#3071 Organic \$4.29  
4g (~10 seeds)

**Cinderella**

A beautiful, flavorful, French pumpkin with vibrant, deep orange skin. This classic was inspiration for the coach in Cinderella's tale.

H • 110 days

#0170 \$2.99 3g (~9 seeds)

**Howden**

*Cucurbita pepo*

This is the ideal carving pumpkin. Good round shape, bright orange color and the perfect size for spook-tacular jack o'lanterns.

110 days

#3113 Organic \$3.49  
3g (~12 seeds)

**Jack Be Little**

*Cucurbita pepo*

Fun for kids' crafts, fall décor, or sweet treat. Small enough to grow in a large container. Stores up to a year!

95 days

#0142 \$2.49 1g (~12 seeds)

**Jack O'Lantern**

*Cucurbita pepo*

Bred to be the size of a human head. So go "ahead" and carve a scary "Stingy Jack" face. Boo! Toast seeds for a yummy treat.

H • 105 days

#0039 \$2.29 4g (~13 seeds)

**Jarrahdale**

Dazzling, deeply ribbed shape and shiny slate gray color. A magical decoration, whole or carved.

H • 100 days

#0197 \$2.69 3g (~12 seeds)

**Lumina**

A ghostly white pumpkin wonderful for carving and painting. Also has excellent flavor and texture for baking.

90 days

#0158 \$3.49 6 seeds

**Red Warty Thing**

Developed from an 1897 heirloom, this warty creature boasts delicious, fine-grained flesh for savory soups, veggie roasts, and pies. Awesome fall decoration, too!

110 days

#0237 \$4.29 8 seeds

**Sugar Pie**

*Cucurbita pepo*

What's in a name? 'Sugar Pie's' marvelous, sweet flavor and smooth texture make it perfect for pies. True to its name!

H • 90-115 days

#3128 Organic \$4.29  
3g (~19 seeds)

**QUINOA**

*Chenopodium quinoa*

Frost tolerant

**Brightest Brilliant Rainbow**

Seeds are high in protein, gluten-free, and have a delicious, nutty flavor. Dazzling colors add beauty to the garden palette and are brilliant in the evening light.

90-120 days

#2013 Organic \$2.49  
500mg (~120 seeds)

**RADICCHIO Palla Rossa**

*Cichorium intybus*

Frost tolerant

**Mavrik**

Radicchio adds bold flavor to fresh salads. Rounded heads full of colorful leaves provide gourmet flair straight from your garden. Also known as an Italian chicory.

80-95 days

#3119 Organic \$1.99  
200mg (~300 seeds)

**key**

H=Heirloom

DR=Disease Resistance

ID=Intermediate Day (onion)

Det.=Determinate (tomato)

N=Native

LD=Long Day (onion)

SD=Short Day (onion)

Semi-det.=Semi-determinate (tomato)

**RADISH**

*Raphanus sativus*  
Frost tolerant

**Cherry Belle**

Ready to eat in 24 days!  
Cherry red skin covers crystal white interior. 1949 All-America Selections winner that's still a favorite.

H • 24 days

#0042 Conventional \$2.29

6g (~460 seeds)

#3048 Organic \$2.69

3g (~230 seeds)

**Crimson Giant**

A big crimson beauty with the same great mild flavor and crunchy texture of other spring radishes. Makes extra large radish "roses"!

H • 28 days

#0058 \$2.29 6g (~580 seeds)

**Easter Egg Blend**

Nothing says spring like the fresh taste of a crisp, homegrown radish! This bright blend of colors is perfect for salads and relish trays.

30 days

#0195 Conventional \$2.49

4g (~340 seeds)

#3093 Organic \$2.29

2g (~170 seeds)

**French Breakfast**

A favorite in Paris markets since the 1800s. Mild flavor. Withstands heat better than other radishes.

H • 28 days

#3008 Organic \$2.69

3g (~210 seeds)

**Rat's Tail**

Intriguing as its name, these bean-like pods grow above ground! Crisp, with a hint of spiciness, delicious fresh, cooked, or pickled.

H • 40–50 days

#0215 \$2.29 250mg

(~18 seeds)

**Rudolf**

An award-winning, classic, red radish, excellent for both spring or fall growing and resists pithiness and cracking.

25 days

#3011 Organic \$2.69

1g (~80 seeds)

**Daikon****Miyashige White**

An exciting addition to salads or stir-fries, this huge Japanese daikon radish is crisp and flavorful, yet very mild. Quite different from round, red radishes. Also used as a cover crop. Sow in summer/fall.

H • 50–60 days

#3086 Organic \$2.49

2g (~150 seeds)

**Watermelon****Mantanghong** (hybrid)

This large, mild, winter radish looks like a miniature slice of watermelon! Beautiful carved into radish flowers. Stores for several months. Sow in late summer/fall.

65 days

#0187 \$2.99 1g (~80 seeds)

**RUTABAGA**

*Brassica napus* subsp. *rapifera*  
Frost tolerant

**American Purple Top**

Delicious, firm, sweet roots are a must for hearty soups and casseroles. Easy to grow, excellent winter storage crop.

H • 80–120 days

#0241 \$1.99 2g (~480 seeds)

**SORREL**

*Rumex acetosa*  
Frost tolerant

**Common Sorrel**

One of the earliest spring greens; add to salads for a lemony spinach flavor. This perennial has been enjoyed in Europe for hundreds of years.

H • 60 days

#0137 \$2.29 500mg (~410 seeds)

**SPINACH**

*Spinacia oleracea*  
Frost tolerant

**Bloomsdale**

An old favorite among gardeners, 'Bloomsdale' has excellent flavor. Fall-grown leaves are every bit as succulent as spring leaves and baby greens.

H • 28–45 days

#3007 Organic \$2.99 3g (~220 seeds)

#7603 Organic Large \$5.59 8g (~590 seeds)



**Lavewa**

Tender and luscious; a winner in our spinach trials. The smoother leaf makes it ideal for baby greens. Easy to grow and heat tolerant.

28–45 days

#0207 \$2.69 3g (~290 seeds)

**Matador**

A nutrient-packed spinach with dark green, smooth leaves. Enjoy raw in a salad or mixed into cooked dishes.

28–48 days

#0304 \$2.29 3g (~220 seeds)

**Oceanside (hybrid)**

A superb cultivar for tender, flat-leaf, baby spinach that can be found at the farmers market. The smooth, uniform leaves make it easy to clean.

25–60 days

#0081 \$2.99 2g (~115 seeds)

**SQUASH Summer**

*Cucurbita pepo*

Frost sensitive. Bush habit.

**Black Beauty**

An award-winning garden standard and the most widely grown summer squash. Tender, creamy, and flavorful. Can be picked as a “baby” zucchini.

H • 55 days

#0048 Conventional \$2.29  
4g (~19 seeds)

#3049 Organic \$2.99  
3g (~14 seeds)

**Costata Romanesco**

Exemplary Italian heirloom with big, nutty flavor. Deep ribs make cross-cuts a beautiful, intriguing presentation.

H • 52–60 days

#3175 Organic \$3.49 12 seeds

**Cube of Butter (hybrid)**

This one has it all—delicious flavor, beautiful color, non-stop production, and a compact growing habit. Delightful picked for baby squash or full-sized fruits.

50 days • DR

#0252 \$4.29 12 seeds

**Dirani (hybrid)**

A customer favorite, ‘Dirani’ rewards with plenty of sweet, rich squash for fresh eating and cooking. Fast growing and compact plants.

50 days

#0250 \$2.99 12 seeds

**Early Prolific Straightneck**

A 1938 award winner with creamy, firm, deliciousness in every bite and still a favorite. Seed to table in just 45 days!

H • 45 days

#3006 Organic \$2.69 2g (~18 seeds)

**Emerald Delight (hybrid)**

Small on space? This compact hybrid is extremely productive for plenty of flavorful, small zucchini to last the season. Great disease resistance.

50–55 days • DR

#0240 \$3.49 12 seeds

**Max's Gold (hybrid)**

A garden treasure, this unique, productive, golden-yellow zucchini has superior flavor and texture for fresh eating and cooking.

55 days

#0248 \$2.99 12 seeds

**Round Zucchini**

This delightful small, round squash is packed full of mellow, sweet flavor. Makes adorable individual serving bowls!

45 days

#0143 \$2.29 3g (~22 seeds)

**Scallop Blend**

With a slightly more buttery, nutty flavor than other summer squashes, these patty pan “flying saucers” are out of this world!

H • 45–60 days

#0163 \$2.29 2.5g (~20 seeds)

**Sunstripe (hybrid)**

Like rays of sunshine in the garden! These striped yellow squash have a distinctive appearance and delectable flavor.

50 days

#0283 \$4.29 12 seeds



**SQUASH Winter**

*Cucurbita maxima* (unless noted)  
Frost sensitive. Vining habit.

**Honey Boat**

*Cucurbita pepo*

Sweet as honey, this perfectly-portioned delicata is a chef's delight! Nutritious and full of flavor, winter squash is a warm reminder of summer's bounty. Short vines.

90 days

#3076 Organic \$3.49 1.5g (~19 seeds)

**Honeynut**

*Cucurbita moschata*

This small, extra sweet butternut cousin was bred in collaboration with a farm-to-table chef—perfecting flavor and texture. The color of the skin changes to terracotta, signaling ripeness. Compact plants are great for small spaces. Short vines.

110 days

#3182 Organic \$4.29 10 seeds

**Kurinishiki Kabocha** (hybrid)

Small (3–4 pound), reliable Japanese kabocha with incredibly sweet, nutty flavor. Similar to a sweet potato in flavor and texture.

95 days

#0112 \$4.29 10 seeds

**Lakota**

This vibrantly-colored squash has deliciously sweet and nutty flavor. Once a staple food of Native Americans, it stores well for a winter treat. Long vines.

H • 85–100 days

#3149 Organic \$3.49 2g (~8 seeds)

**Pink Banana**

Introduced around 1900 and common in American pioneer gardens. Large, beautiful salmon-pink squash is delectably sweet and tender. Long vines.

H • 100–120 days

#0157 \$2.69 3g (~8 seeds)

**Red Kuri**

Teardrop-shaped and brightly colored, this squash begs to be picked and enjoyed. Highly productive with a sweet, nutty flavor some say is even better than pumpkin for cooking. Short vines.

H • 95 days

#3163 Organic \$2.99 1.5g (~5 seeds)

**Sweet Meat**

Sweet or savory, it's a treat! The flavor of this squash is so delectable, there's no need for butter or spices. Long storage ability. Medium vines.

H • 95–110 days

#0245 \$2.69 3g (~9 seeds)

**Table King**

*Cucurbita pepo*

Wonderful, rich flavor, compact habit, and long storage ability made 'Table King' an All-America Selections award winner. Compact vines are great for small-space gardening.

80 days

#3133 Organic \$3.49

2g (~21 seeds)

**Vegetable Spaghetti**

*Cucurbita pepo*

This amazing squash separates into long, spaghetti-like strands when cooked! Serve just like pasta! Stores up to 6 months. Medium-long vines.

H • 90–100 days

#3171 Organic \$3.49

2.5g (~12 seeds)

**Waltham Butternut**

*Cucurbita moschata*

The taste of fall! Amazingly flavorful, versatile, long-storing squash on vigorous vines. Popular since the 1970s. An All-America Selections winner. Medium vines.

100 days

#0047 Conventional \$2.49

4g (~35 seeds)

#3111 Organic \$3.49 2g (~18 seeds)

**STRAWBERRY**

*Fragaria vesca*

Frost tolerant

**Red and Yellow Wonder Blend**

Alpine strawberries are wildly delicious—packed with flavor and fragrance, like nature intended. Petite, well behaved plants make a darling border.

150 days

#0069 \$1.99 50mg (~130 seeds)

**key**

H=Heirloom

DR=Disease Resistance

ID=Intermediate Day (onion)

Det.=Determinate (tomato)

N=Native

LD=Long Day (onion)

SD=Short Day (onion)

Semi-det.=Semi-determinate (tomato)

**SWISS CHARD**

*Beta vulgaris* subsp. *vulgaris*  
Frost tolerant

**Celebration**

Celebrate color! Delicious and nutritious as a baby green or full size. Especially narrow, richly colored stems are ornamental in flower gardens or containers.

20–63 days

#0299 \$3.49 1.5g (~43 seeds)

**Five Color Silverbeet**

This specially selected mix has brilliant stem and leaf colors that will create a dazzling rainbow in the garden and on the table. Produces through frost.

20–60 days

#3114 Organic \$3.49 1.5g (~80 seeds)

**Fordhook Giant**

An endless supply of fresh greens to harvest spring through fall. More heat and cold tolerant than its colorful counterparts.

H • 20–60 days

#3050 Organic \$2.69  
2g (~140 seeds)

**Ruby Red | Rhubarb**

Sweet, tender leaves with brilliant red ribs are absolutely delicious as well as strikingly beautiful! Wonderful baby green, too!

H • 20–60 days

#3129 Organic \$2.69 2g (~140 seeds)

**TOMATILLO**

*Physalis philadelphica*  
Frost sensitive

**Grande Rio Verde**

Large-fruited cultivar with big flavor! This tomatillo is special, setting most of its fruit at once for big batches of salsa verde, enchilada sauce, and more!

85 days from transplanting

#3064 Organic \$2.49  
150mg (~360 seeds)

**Purple**

These purple beauties are sweeter than their green cousins, rich in antioxidants, add fabulous color to culinary creations, and are just tall, beautiful plants!

70 days from transplanting

#3065 Organic \$2.69 150mg (~100 seeds)

**TOMATO**

*Solanum lycopersicum*  
Frost sensitive

**Bush****Ace 55**

'Ace 55' is a tried and true favorite! Robust flavor, lower acidity. Excellent yield and great for canning.

H • Det. • 80 days

from transplanting • DR

#3039 Organic \$2.29 25 seeds

**Glacier**

The sweetness of summer from spring to fall. Extremely cold-tolerant variety from Sweden produces great-tasting fruits earlier than other varieties.

Semi-det. • 55 days

from transplanting

#0256 \$2.29 25 seeds

**Red Pride (hybrid)**

These large, bright red luscious tomatoes take the prize for consistent performance.

Det. • 78 days from

transplanting • DR

#0292 \$4.29 15 seeds

**Bush, Cherry****Cherry Falls (hybrid)**

Spilling over the edges of hanging baskets and containers, 'Cherry Falls' with bright red, luscious cherry tomatoes, is excellent for small spaces.

Det. • 55–65 days

from transplanting

#3110 Organic \$2.49 15 seeds

**Patio Choice Yellow (hybrid)**

Compact cherry tomato plants reach 18" tall—perfect for small spaces and containers. Highly productive, with sweet, yellow fruits.

Det. • 45 days

from transplanting

#0111 \$3.49 20 seeds

**Bush, Roma****Italian Roma**

Superb Italian paste and canning tomato. Also delicious sliced for salads and sandwiches! Heavy producer.

Det. • 80 days from transplanting

#3055 Organic \$2.49 25 seeds

**key**

H=Heirloom

DR=Disease Resistance

ID=Intermediate Day (onion)

Det.=Determinate (tomato)

N=Native

LD=Long Day (onion)

SD=Short Day (onion)

Semi-det.=Semi-determinate (tomato)

**Supremo (hybrid)**

This highly productive Roma has extra-large fruit. A delicious, reliable variety for canning, sauces, or eating fresh. Excellent disease resistance.

Det. • 68 days from transplanting • DR  
#0294 \$4.29 10 seeds

**Pole****Beefsteak**

An old favorite with huge tomatoes sometimes reaching two pounds! Slice thick, succulent slabs for sandwiches.

H • Ind. • 96 days from transplanting  
#3001 Organic \$2.29 25 seeds

**Black Krim**

Beautiful, dark purple-black fruits have rich, old-fashioned flavor outstanding for fresh eating! Reliable and very productive. Russian heirloom.

H • Ind. • 70–90 days from transplanting  
#3118 Organic \$2.49 25 seeds

**Brandywine Red & Yellow Blend**

Rich in history and filled with flavor, this mix of large, colorful tomatoes provides a bountiful harvest that's legendary.

H • Ind. • 76–100 days from transplanting  
#3130 Organic \$2.49 25 seeds

**Cherokee Purple**

This old-fashioned variety from Tennessee has a rich flavor and striking color that sets it apart from the rest. Very productive plants.

H • Ind. • 80 days from transplanting  
#3002 Organic \$2.29 25 seeds

**Golden Jubilee**

A dazzling, golden-orange, award-winning tomato with mild, delectable flavor. Gorgeous color in salads and sauces.

H • Ind. • 75–80 days from transplanting • DR  
#0308 \$2.29 25 seeds

**Green Zebra**

Organic plant breeder Tom Wagner bred this unique fruit from heirloom parents for sweet, not too acidic, well-balanced flavor. Crack resistant.

Ind. • 75 days from transplanting  
#3143 Organic \$2.49 25 seeds

**Moskvich**

One of our earliest tomatoes, 4–6 ounces, with rich, classic flavor. Cold tolerant for an earlier harvest. Very crack resistant.

Ind. • 60 days from transplanting  
#3005 Organic \$2.69 20 seeds

**Oxheart**

A sweet, uniquely shaped Italian heirloom. Perfect in a caprese salad or cooked to a thick, hearty sauce. Also known as 'Cuore di Bue'.

Dense with few seeds.  
H • Ind. • 70–85 days from transplanting  
#3167 Organic \$2.49 25 seeds

**Pineapple**

A taste-test winner and one of our favorites! Fruity, beautiful, and delicious in a fresh summer salad.

Ind. • 90 days from transplanting  
#0272 \$2.29 25 seeds

**Pole, Cherry****Artisan Bumble Bee Blend**

Beautiful blend of three distinctly striped bumble bee varieties. With bright colors and flavor, these are gourmet to the eye and palate. Crack resistant.

Ind. • 70 days from transplanting  
#3169 Organic \$3.49 15 seeds

**Chocolate Cherry**

These divine garden gems are richly colored and sweet. Prolific vines bear crack-resistant fruits.

Ind. • 70 days from transplanting  
#3160 Organic \$2.29 20 seeds



**Gardener's Delight**

The name says it all. Also called 'Sugar Lump', these bite-sized, wonderfully sweet, flavorful fruits are truly a delight!

H • Ind. • 65 days  
from transplanting  
#0052 \$2.29 25 seeds

**Rainbow Blend**

A beautiful mix of gourmet cherry tomatoes in a rainbow of colors. Super value at seven varieties in one packet!

Ind. and Det. • 55–90 days  
from transplanting  
#0152 \$2.29 100mg (~60 seeds)

**Red & Yellow Pear Blend**

A treat for all, this 1800s variety mix is sure to delight. Firm fruits with few seeds. A value pack—two varieties, one price! Very productive.

H • Ind. • 75 days  
from transplanting  
#3137 Organic \$2.69  
25 seeds

**Sun Gold (hybrid)**

Intensely sweet little drops of golden summer goodness. 'Sun Gold' is one of our most loved and requested tomatoes!

Ind. • 57 days  
from transplanting  
#0185 \$4.29 10 seeds

**Sweetie**

Vigorous vines produce clusters of delicious fruit with classic tomato flavor. Low acid.

Ind. • 65 days  
from transplanting  
#3067 Organic \$2.49  
25 seeds

**Pole, Roma****San Marzano**

Classic Italian paste tomato considered by many to be the world's best. So high-yielding, this plant will be dripping with fruit!

H • Ind. • 70–90 days  
from transplanting  
#3087 Organic \$2.49 25 seeds

**TURNIP**

*Brassica rapa*  
Frost tolerant

**Market Express**

These crunchy roots have a sweet, mild-radish flavor and are especially suited for eating fresh like an apple at baby size.

30–40 days  
#0013 \$2.99 400mg (~120 seeds)

**Purple Top White Globe**

Store-bought turnips cannot compare. Nutritious, delicious greens and hearty roots are what homegrown turnips are all about!

H • 50 days  
#3106 Organic \$2.29  
2g (~740 seeds)

**WATERMELON**

*Citrullus lanatus*  
Frost sensitive

**Charleston Gray**

With a bright red, sweet, crisp interior, Charleston gray is a delight with every bite. An extra large favorite since 1954.

H • 85–100 days • DR  
#0284 \$2.49 2g (~40 seeds)

**Crimson Sweet**

Biting into a fresh slice of this crisp, juicy, extra sweet, large-fruited watermelon is the perfect complement to a summer's day. A high-quality old standard.

H • 85 days • DR  
#3051 Organic \$2.49  
1.5g (~34 seeds)

**Mountain Sweet Yellow**

The talk of the summer picnic, large, colorful, very sweet yellow fruit is beautiful in fruit salads or simply sliced and served.

H • 95–100 days  
#3157 Organic \$3.49 1g (~10 seeds)

**Sugar Baby**

'Sugar Baby' delivers mouth-watering, juicy sweetness. Small, 7–10 lb. fruit with few seeds; very productive plants. Introduced in 1959.

H • 80 days  
#3131 Organic \$2.49  
1.5g (~28 seeds)

**WHEATGRASS**

See pg 32



**BASIL**

*Ocimum basilicum* (unless noted)

**Cardinal**

With large, densely packed, dark-red flowers atop lush foliage and that unmistakable basil aroma and flavor, experience the delight of 'Cardinal' as a stunning cut flower!

A ✨ ✨

#6000 Organic \$2.69 30 seeds



**Everleaf Emerald Towers**

A tower of deep green, fragrant basil that doesn't flower until late in the season, providing a long harvest; densely packed with leaves.

A ✨ ✨

#5000 \$4.29 20 seeds



**Italian Genovese**

Widely grown in Genoa area of Italy—the pesto capital of the world. Traditional flavor for the best pesto!

H • A ✨ ✨

#6027 Organic \$2.49  
1.5g (~700 seeds)

#7750 Organic Large \$5.59  
6g (~2,770 seeds)



**Lemon**

Lemon basil brings a lemony aroma and lemon tang to both savory and sweet dishes. Compact plants.

A ✨ ✨

#6133 Organic \$2.49  
500mg (~240 seeds)



**Lettuce Leaf**

Large, delicately crinkled leaves are both beautiful and flavorful. Use 6" leaves as a wrap or in place of lettuce to elevate dishes.

H • A ✨ ✨

#5019 \$2.49 2g (~960 seeds)



**Purple Petra**

Perfect for purple pesto, colorful salads, and a lovely pink vinegar or oil. A striking accent plant in the garden or floral arrangement.

A ✨ ✨

#6093 Organic \$2.49  
500mg (~240 seeds)



**Six Basil Blend**

Savor the "sweet life" with this delightful blend to fill the garden with colors, flavors, and scents, including cinnamon, Genovese, lemon, lime, 'Large Leaf', and 'Dark Opal'.

A ✨ ✨

#6117 Organic \$2.69 1g (~480 seeds)

#7752 Organic Large \$4.59  
3g (~1,440 seeds)



**Sweet Thai**

A sweet, complex basil with hints of anise and clove that complement Asian cuisine. A fragrant ornamental.

H • A ✨ ✨

#6134 Organic \$2.49  
300mg (~200 seeds)



**Tulsi**

*Ocimum sp.*  
This revered, ancient, holy basil makes a healthful tea with a spicy, fruity aroma that is soothing to the mind and body.

H • A ✨ ✨

#6132 Organic \$2.69  
300mg (~140 seeds)



**BORAGE**

*Borago officinalis*

Clusters of sparkling blue flowers look like stars fallen from the sky. Edible flowers are beautiful on salads, or candied atop cakes and pastries.

H • A ✨ ✨

#5026 Conventional \$1.99  
1g (~43 seeds)

#6127 Organic \$2.69 1g (~43 seeds)



**CALENDULA | POT MARIGOLD**

See pg 35

**CAT GRASS**

*Avena sativa*

Oat grass satisfies cats' craving for greens with a safe alternative to houseplants and turfgrass. Provides vitamins and minerals for a healthy kitty and even aids in digestion. Grow indoors.

A ✨ ✨ 10-15 days

#1169 Conventional \$1.99  
15g (~420 seeds)

#6137 Organic \$2.29 15g (~420 seeds)

#7201 Large \$4.59 45g (~1,260 seeds)

#7753 Organic Large \$4.59 45g (~1,260 seeds)



**key**

☀️ FULL SUN: 6-8 hours direct sun   ✨ PART SHADE: 3-6 hours direct sun   💧 DROUGHT TOLERANT  
A=Annual P=Perennial B=Biennial T=Tender Perennial H=Heirloom N=Native DR=Disease Resistance

**CATNIP***Nepeta cataria*

Cats will enjoy frolicking in a patch of this fragrant, attractive plant, while people will enjoy a tea brewed from the leaves. Grows well in containers.

H • P \* \* \*

#5027 Conventional \$2.29

600mg (~770 seeds)

#6064 Organic \$2.69

350mg (~440 seeds)

**CHAMOMILE***Matricaria recutita***German**

Lovely, apple-scented flowers for soothing tea, potpourris, and dried flower arrangements. An easy-to-grow staple in any herb garden and terrific cut flower.

H • A \*

#5028 Conventional \$2.29

500mg (~6,320 seeds)

#6081 Organic \$2.69

250mg (~3,160 seeds)

**CHERVIL***Anthriscus cerefolium*

An essential ingredient in French cooking, chervil provides a subtle flavor and aroma to many culinary dishes.

H • A \* \* \*

#5029 \$1.99 1g (~350 seeds)

**CHIVES****Common***Allium schoenoprasum*

Beautiful, edible flowers and delicate, onion-flavored foliage. Very easy to grow in the garden or container.

H • P \* \* \* ♀

#5031 Conventional \$2.29

800mg (~470 seeds)

#6062 Organic \$2.69 500mg (~290 seeds)

**Garlic***Allium tuberosum*

Leaves, flower buds, and flowers have a delightful, mild, garlic flavor. Easy to grow, good for containers, and can also be grown indoors!

H • P \* \* \* ♀

#5030 \$2.29 600mg (~120 seeds)

**CILANTRO | CORIANDER***Coriandrum sativum***Long Standing Santo**

Both foliage (cilantro) & seed (coriander) make this herb one of the most useful and tasty.

H • A \* \* \*

#6028 Organic \$2.29

4g (~250 seeds)

#7751 Organic Large \$4.59

12g (~740 seeds)

**Moroccan** **NEW**

Produces abundant, extra-large, full-flavored coriander seeds. Fast-growing leaves have classic cilantro flavor.

A \* \* \*

#5015 \$1.99 4g (~340 seeds)

**DILL***Anethum graveolens***Bouquet**

Early, large seed heads with robust flavor make 'Bouquet' dill an excellent pickling spice. A host plant for swallowtail butterflies.

H • A \*

#6030 Organic \$2.49

3g (~1,560 seeds)

**Tetra**

This bush variety of dill is slow-to-bolt and heat-tolerant, resulting in more fresh leaves throughout the season. Attracts swallowtail butterflies and other beneficial insects.

A \*

#5047 \$2.29 3g (~2,160 seeds)

**FENNEL***Foeniculum vulgare var. azoricum***Finocchio**

Grown as a vegetable for the sweet, licorice-flavored "bulbs" or as an herb for the delicately flavored foliage and aromatic seeds.

H • P \*

#5032 \$2.29 1g (~120 seeds)

**Romanesco**

Larger, more uniform "bulbs," and delicately flavored foliage. Developed for cool, northern climates with good bolt resistance.

H • P \*

#6129 Organic \$2.69 500mg (~60 seeds)

**key**

☀️ FULL SUN: 6–8 hours direct sun    ☀️ PART SHADE: 3–6 hours direct sun    ♀️ DROUGHT TOLERANT  
 A=Annual P=Perennial B=Biennial T=Tender Perennial H=Heirloom N=Native DR=Disease Resistance

**LEMON BALM***Melissa officinalis*

Lemon balm makes a relaxing, refreshing iced tea, and the plant brings a delightful lemony scent to the garden.

H • P ✨ ✨

#6078 Organic \$2.49  
200mg (~270 seeds)**MARJORAM***Origanum majorana*

With a sweeter, milder flavor than oregano, marjoram is wonderful used fresh in salads and cooked dishes. Excellent dried.

H • A ✨ ☹

#6001 Organic \$3.49  
200mg (~480 seeds)**MINT***Mentha sp.***Common**

A versatile herb, mint has a refreshing quality that enlivens iced drinks, jellies, and hot dishes, as well as crafts and bath water!

H • P ✨ ✨

#5003 \$1.99 25mg  
(~220 seeds)**OREGANO***Origanum vulgare***Common**

Use this mild-flavored oregano in pizza sauce, pastas, and salsa. Dainty pink blooms add to its beauty.

H • P ✨ ☹

#6110 Organic \$2.69  
100mg (~800 seeds)**True Greek**

This true culinary oregano jazzes up a multitude of foods—eggs, meats, veggies, and, of course, Italian and Greek dishes!

H • P ✨ ☹

#5037 \$2.49 100mg  
(~960 seeds)**PARSLEY***Petroselinum crispum***Flat Leaf**

Prized by gourmets as the most flavorful of all parsleys. High nutritional value. Will grow in part shade and indoors in containers.

H • B ✨ ✨

#6095 Organic \$2.29 1.5g (~690 seeds)

**Moss Curled**

This beautiful, all-purpose herb with a mild, refreshing flavor cleanses the palate, and freshens breath, while being nutritional.

H • B ✨ ✨

#6011 Organic \$1.99  
1g (~460 seeds)**ROSEMARY***Rosmarinus officinalis*

Wonderful flavor and aroma! Perk up lamb, fish and poultry, potatoes, soups, and bread! An excellent container herb for indoors.

H • T ✨ ☹

#5039 \$2.49 50mg (~32 seeds)

**SAGE***Salvia officinalis***Broadleaf**

Strong, unique taste and aroma that enhances the flavor of many dishes. It is a striking ornamental in borders, rock gardens, and containers.

H • P ✨ ✨ ☹

#6092 Organic \$2.69 25 seeds

**SAVORY****Summer***Satureja hortensis*

A highly aromatic herb with peppery flavor. Fresh leaves add an exciting twist to salads. Terrific in herb rubs for grilling and a fragrant bouquet filler.

H • A ✨

#5041 \$1.99 750mg (~930 seeds)

**Winter***Satureja montana*

Peppery with hints of thyme and mint, this herb adds complex flavor to savory meals. An attractive ornamental in the flower garden.

H • P ✨ ☹

#5064 \$2.29 200mg (~320 seeds)



**SHISO | PERILLA***Perilla frutescens***Green and Red**

Also known as Japanese basil or beefsteak plant, shiso's flavor can be described as a combination of cinnamon, mint, clove, and cumin. Also commonly used as a heat- and drought-tolerant ornamental.

H • A \* \* \* ♻️

#5048 \$2.49 500mg (~280 seeds)

**STEVIA***Stevia rebaudiana***Candy**

The sweetest plant ever grown! Fresh or dried leaves add natural sweetness to tea, fruit salads, and many other dishes. A terrific house plant!

A \* \* \*

#6128 Organic \$3.49 12 seeds

**TARRAGON***Tagetes lucida***Mexican**

Tarragon adds a burst of flavor to any dish. Beautiful in the herb garden and flowerbed.

H • T \* \* ♻️

#6135 Organic \$3.49 250mg (~200 seeds)

**THYME***Thymus vulgaris***English**

A savory herb that no cook should be without! Endless culinary possibilities. An aromatic and attractive plant. Good container variety.

H • P \* \* \* ♻️

#6079 Organic \$2.99 350mg (~1,400 seeds)

**WATERCRESS***Nasturtium officinale*

Watercress adds snappy, peppery flavor to salads, omelets, and potato salads. Classic ingredient in finger sandwiches served at an English tea.

H • P \* \* \*

#6116 Organic \$2.69 200mg (~320 seeds)

**WILD BERGAMOT***Monarda fistulosa*

Enjoy the cooling, minty flowers and leaves in tea or jellies. This fragrant, prairie wildflower, also known as "Oswego tea", resists mildew and grows well even in poor soil and with short periods of drought. Attracts hummingbirds and other pollinators.

N • P \* \* \* ♻️

#5002 Conventional \$2.29 100mg (~260 seeds)

#6012 Organic \$2.49 100mg (~260 seeds)

**Garden-inspired Gifts**

Add a botanic flair to your store's gift department with calendars that every gardener will love.

**Calendars**

Our desktop calendar is back for 2023! Botanically inspired design, with illustrations of our newly introduced varieties. This is one of our most requested items, as they are handy as well as beautiful, and make excellent gifts!

#8036 (case of 20) MSRP \$9.99 each

## BABY GREENS

### Apple Blossom Swiss Chard Blend

*Beta vulgaris* subsp. *vulgaris*  
Impressive flavor and color of Swiss chard in small, delicate baby greens.

Mix of red and white stems and deep-green leaves bring a balance of beauty and flavor to the table.

Heirloom • 20–35 days

#7623 Organic Large \$5.59

10g (~720 seeds)



### Arugula | Rocket

*Eruca vesicaria*

This one's for arugula lovers! Top pizza, add to sandwiches, or make a spicy pesto. Packs a punch of intense arugula flavor. Arugula baby greens are full of vitamins and antioxidants and are a great source of calcium and iron, too.

20–28 days

#7622 Organic Large \$4.59

3g (~1,210 seeds)



### Market Day Lettuce Mesclun

*Lactuca sativa*

Vibrant greens with hints of burgundy, this mild-flavored mix makes the perfect bistro salad.

20–25 days

#7624 Organic Large \$6.29

5g (~2,600 seeds)



### Must Have Mustards (hybrid)

*Brassica*, assorted species

This custom blend truly "cuts the mustard"! These baby greens are as interesting to look at as they are to taste. Very nutritious.

25–30 days

#7320 Large \$5.59 6g (~2,400 seeds)



### Pea Shoots

*Pisum sativum*

Pea shoots are destined to be a popular addition to all kitchens. Exceptionally tender, pea shoots impart the sweet flavor of fresh peas into fresh and cooked dishes. Excellent for topping salads, juicing, and adding to smoothies.

10–20 days

#7627 Organic Large \$4.59

50g (~280 seeds)



### Red Russian Kale

*Brassica napus*

Tons of nutrition and flavor packed into petite leaves! More tender than full-sized leaves, kale baby greens are best enjoyed raw.

Heirloom • 25–30 days

#7626 Organic Large \$5.59

6g (~1,150 seeds)



### Smoothie Mix

Assorted species

Make a healthful smoothie even better! Add this perfect mix of nutrient-packed, antioxidant powerhouses to any-time-of-day smoothies for a great boost of energy!

25–35 days

#7323 Large \$4.59

15g (~2,400 seeds)



### Snappy Fresh Mesclun

*Lactuca sativa*, *Eruca vesicaria*

Oh snap! In just a few weeks, harvest a varied combination of green and red leaves, and mild and spicy flavors. Fresh and crisp custom mix adds a "snap" of flavor to salad mixes!

20–25 days

#7625 Organic Large \$6.29

5g (~2,600 seeds)



### Spinach (hybrid)

*Spinacea oleracea*

Perfect spinach flavor! Delicious in a warm spinach salad dressed with sweet and sour dijon dressing. The baby leaves are excellent in smoothies and green drinks too!

20–25 days

#7321 Large \$5.59

10g (~465 seeds)



### Superfoods

*Brassica*, assorted species

Superfoods for a super you! A beautiful blend of healthful veggie greens right at your fingertips for smoothies, salads, and more. High in glucosinolates, vitamins, and fiber, yet low in calories.

23–35 days

#7324 Large \$4.59

12g (~2,880 seeds)



## MICROGREENS

### Ciao Bella Basil Blend

*Ocimum basilicum*

Hello beautiful! As the name suggests, this basil blend has attractive purple and green leaves with the signature basil flavor from a Genovese basil and sweetness from 'Dark Opal'. Add to pasta dishes, pizza, and caprese salads.

16–25 days

#7754 Organic Large \$5.59  
6g (~4,800 seeds)



### Cilantro

*Coriandrum sativum*

Delicately frilled with big, fresh flavor to liven up soups, tacos, pesto, smoothies, and the list goes on. More intense flavor than the mature plant!

14–21 days

#7820 Organic Large \$5.59  
20g (~1,230 seeds)



### Early Wonder Beet

*Beta vulgaris*

The vibrant magenta stem is unmistakable! Beautiful on their own or mixed with other greens, these striking microgreens add an intense beet flavor to warm or cold dishes.

Heirloom • 15–25 days

#7325 Large \$4.59  
20g (~1,760 seeds)



### Italian Amaro Blend

*Cichorium endivia*, *C. intybus*

Go Italian with our special blend of chicories! Like salt on chocolate, a balsamic dressing or soy sauce will enhance the flavor of these lively Italian greens. Also delicious paired with soft cheeses.

15–25 days

#7319 Large \$4.59  
6g (~2,880 seeds)



### Jazzy Mix

*Brassica*, *Raphanus*, and *Lepidium*, assorted species

Add a peppery bite to sandwiches, salads, and soups with these tasty gems! Easily grow the latest trend in upscale restaurants right at home, year-round, for fresh flavor and nutrition.

12–14 days

#7327 Large \$5.59  
24g (~9,220 seeds)



### Mellow Blend

*Brassica*, assorted species

Living up to its name, this mix gives a delicate flavor boost to all types of cuisine. A beautiful bed of soft, petite greens with hints of burgundy will add color to any main dish, sandwich, or salad.

10–15 days

#7621 Organic Large \$5.59  
12g (~2,400 seeds)



### Mild Mix

*Beta* and *Brassica*, assorted species

Vegetable confetti! A healthful gourmet treat with an appealing flavor and texture combination, as well as a beautiful color presentation that is easy to grow at home.

5–10 days

#7326 Large \$5.59  
24g (~4,030 seeds)



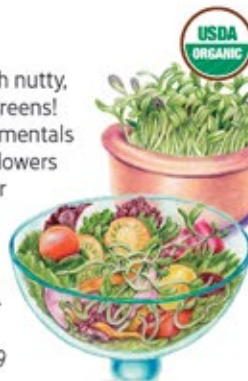
### Sunflower

*Helianthus annuus*

Tickle your taste buds with nutty, crunchy sunflower microgreens! Commonly grown as ornamentals and for edible seeds, sunflowers can also be grown for their delectable young shoots that add a crunchy, finishing touch to salads, pasta, and hors d'oeuvres.

10–20 days

#7628 Organic Large \$5.59  
40g (~510 seeds)



### Growing Trays

Our growing set includes a reusable liner and growing tray, and a domed lid to ensure high humidity. Great for starting seeds, and for growing microgreens and baby greens.

#4745 (case of 6) MSRP \$19.99 each



**Umami Asian Blend**

*Brassica*, assorted species  
Experience the “fifth taste”—savory umami. A zesty mix of nutritious mustards and cabbages create layers of piquant flavor to complement a multitude of Asian dishes.

10–15 days

#7620 Organic Large \$6.29

10g (~2,000 seeds)



**Upland Cress**

*Barbarea verna*

The peppery, refreshing flavor of cress microgreens adds a lively kick to a cream cheese and crackers snack, and zesty flavor to omelets, sandwiches, pizza, and more! Easy to grow on a kitchen windowsill.

14–28 days

#7315 Large \$4.59

10g (~4,800 seeds)



**SPROUTING SEEDS**

**Azuki Bean**

*Vigna angularis*

Strengthen your body with this versatile, high-protein superfood. Healthful and delicious, its nutty flavor and crunchy texture give meals an enlivened makeover. In Asia, they are considered to be a “yang” (warming) bean that strengthens the body.

#7814 Organic Large \$4.59

60g (~380 seeds)



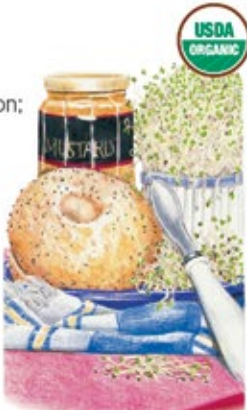
**Alfalfa**

*Medicago sativa*

One of the most popular sprouts, and for good reason; alfalfa sprouts are high in nutrients, low in calories, and their nutty flavor and crisp texture make them delectable in salads, sandwiches, and dozens more dishes. No need for a lot of space or time; this is a “garden” anyone can grow in any climate, year-round!

#7801 Organic Large \$5.59

30g (~12,670 seeds)



**Bean Mix**

*Vigna angularis*, *Vigna radiata*, *Lens culinaris*

A tasty, colorful trio of adzuki beans, mung beans, and lentils provides a mild flavor and pleasant crunch to salads and other dishes. A delicious source of protein and fiber.

#7812 Organic Large \$4.59

60g (~720 seeds)



**Broccoli**

*Brassica oleracea*

So many health benefits in a tiny sprout! Broccoli sprouts are a powerhouse of vitamins, minerals, and antioxidants that may protect against many diseases. Their texture and spicy flavor enhances salads, sandwiches, casseroles, and even breads.

#7802 Organic Large \$5.59 20g (~4,880 seeds)



**China Rose Radish**

*Raphanus sativus*

Pretty rose-colored sprouts are prized for their beauty, making an attractive addition to salads and sandwiches, and add spice to any other dish they are sprinkled on. High in nutrients, low in calories, and very easy to grow!

#7804 Organic Large \$5.59

30g (~1,920 seeds)



**Fenugreek**

*Trigonella foenum-graecum*

Fenugreek sprouts with their nutty, maple syrup aroma add an exotic flavor to meals, especially Indian cuisine. One of the oldest cultivated plants, the vitamin and mineral-packed sprouts, plants, and seeds have been enjoyed for millennia.

#7805 Organic Large \$5.59

20g (~1,280 seeds)



**Garbanzo Bean**

*Cicer arietinum*

Oh so snackable! Also called chickpeas, the crunchy, nutty, little gems are high in fiber, protein, vitamins, and minerals. Their myriad of uses in salads, breads, pastas, soups, and dips will guarantee them a permanent place in your kitchen.

#7809 Organic Large \$4.59

50g (~120 seeds)



**Mung Bean***Vigna radiata*

With crisp, tender texture and mild flavor similar to fresh garden peas, mung bean sprouts are a delicious addition to vegetable dishes, salads, and Asian cuisine.

#7800 Organic Large \$4.59  
60g (~580 seeds)

**Purple Kohlrabi***Brassica oleracea*

What vibrant color! Deep purple and green sprouts add fabulous eye appeal and crunch, not to mention an abundance of vitamins and minerals to make sandwiches and salads special! All the flavor of the kohlrabi stem but milder in these little sprouts.

#7818 Organic Large \$5.59  
8g (~1,470 seeds)

**Red Clover***Trifolium pratense*

Crisp and crunchy, clover sprouts provide essential nutrients, including many vitamins, minerals, and antioxidants. Similar flavor to alfalfa, but red clover more easily sheds its hulls.

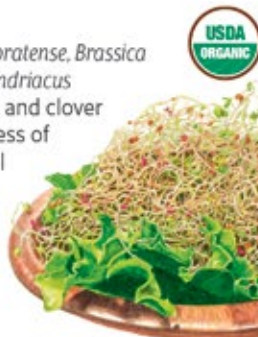
#7819 Organic Large \$5.59  
30g (~4,490 seeds)

**Salad Mix**

*Medicago sativa, Trifolium pratense, Brassica* spp., *Amaranthus hypochondriacus*

Our custom mix of alfalfa and clover combine with the tanginess of broccoli and kale for a full flavor experience, while the burgundy amaranth provides a pop of color.

#7813 Organic  
Large \$5.59  
30g (~4,920 seeds)

**Sandwich Mix**

*Medicago sativa, Trifolium pratense, Raphanus sativus*

Our own special blend for fabulous sandwiches! The mild flavors of alfalfa and red clover mixed with zesty daikon radish sprouts make this blend the perfect sandwich topper for an added zing and crunch.

#7803 Organic Large \$5.59  
50g (~9,120 seeds)

**WHEATGRASS****Liquid Sunshine***Triticum aestivum*

For those who appreciate a mood-lifting boost, a shot of "liquid sunshine" is the answer. Wheatgrass juice provides a healthy dose of chlorophyll and protein, as well as essential vitamins and minerals.

10–15 days  
#3037 Organic \$1.99 15g (~380 seeds)  
#7602 Organic Large \$4.59  
50g (~1,280 seeds)

**Seed Sprouter**

Grow up to four varieties of our healthful, delicious sprouts at once or start a new batch every few days. For a bigger batch, the unique tray dividers are removable. Great for storing sprouts in the refrigerator.  
#4708 (case of 6) MSRP \$47.99 each

**Sprouter Gift Set**

Everything a sprout-lover needs to grow sprouts all year. Each set contains a BPA-free sprouter, instruction and recipe booklet, and four of our most popular sprouting-seed varieties.

#4710 (case of 4) MSRP \$64.99 each





**AFRICAN DAISY***Dimorphotheca sinuata*

Blooms heaviest in cool weather. Attracts pollinators.

**Cape Marigold**

These cheerful blossoms warm up any spot in the garden. When kissed by the sun, their petals open to reveal their stunning purple eyes.

A ☼ ☼ 8"-16" tall  
#1011 \$2.29 500mg (~240 seeds)

**AGERATUM***Ageratum houstonianum*

Blooms summer to frost. Attracts pollinators.

**Blue Planet** (hybrid)

An out-of-this-world shade of blue! Feathery flower clusters on tall stems call butterflies and bees to the garden and beg to be picked for bouquets.

A ☼ ☼ 24"-30" tall  
#1402 \$3.49 25 seeds

**ALYSSUM Sweet***Lobularia maritima*

Blooms spring to frost. Attracts pollinators. Edible flowers.

**Allure Pastel Blend**

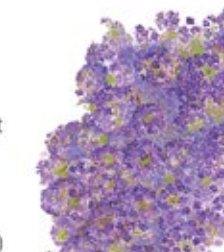
Sweet alyssum in a rainbow of pastel shades adds magic to the garden. Compact and covered with blooms!

A ☼ ☼ ☼ 3"-4" tall,  
6"-12" wide  
#1267 \$2.29 250mg (~700 seeds)

**Oriental Nights**

Tiny, deep-purple flowers with a sweet, delicate fragrance make this low ground cover a delight. Great in pots and baskets.

A ☼ ☼ ☼ 2"-4" tall,  
6"-12" wide  
#1072 \$2.29 250mg (~500 seeds)

**Rosie O'Day**

Sweetly scented beauty brightens the garden with a carpet of rosy pink blossoms. Wonderful in containers or as a cheery border.

H•A ☼ ☼ ☼ 4" tall,  
6"-12" wide  
#1185 \$2.29 250mg (~500 seeds)

**Tiny Tim**

Short and sweet—a superior alyssum! Honey-scented flowers cover compact plants like a summer snowdrift.

A ☼ ☼ ☼ 2"-4" tall,  
6"-12" wide  
#1153 \$2.29 250mg (~500 seeds)

**AMARANTH**

Blooms summer to frost. Attracts pollinators.

**Burgundy**

*Amaranthus hypochondriacus*  
Elegant burgundy plumes add rich color to the back of a border. Striking maroon leaves in fall. Excellent cut flower. Edible seeds and young leaves.

H•A ☼ ☼ 5'-8' tall  
#2012 Organic \$2.49  
500mg (~350 seeds)

**Hot Biscuits**

*Amaranthus cruentus*  
Caramel-colored plumes on upright spikes provide a welcomed variation of shape and color in the garden and make an eye-catching contrast in flower arrangements.

A ☼ ☼ 3'-4' tall  
#1340 \$2.49 300mg (~310 seeds)

**LOVE-LIES-BLEEDING***Amaranthus caudatus*

Blooms summer to frost. Attracts pollinators.

**Coral Fountain**

Coral-pink tassels massed together forming a flower waterfall are so intriguing, it's a must-have for the garden. Long lasting in fresh or dried flower arrangements.

A ☼ ☼ 3'-5' tall  
#1339 \$2.49 200mg  
(~320 seeds)

**Love-Lies-Bleeding**

Crimson tassels cascade gracefully from an exotic, bushy plant. Dramatic in gardens or as a cut or dried flower.

H•A ☼ ☼ 3'-4' tall  
#1190 \$2.29 300mg  
(~360 seeds)

**key**

☼ FULL SUN: 6-8 hours direct sun ☼ PART SHADE: 3-6 hours direct sun ☼ DROUGHT TOLERANT  
A=Annual P=Perennial B=Biennial T=Tender Perennial H=Heirloom N=Native DR=Disease Resistance

**AMMI**

Blooms summer to frost.

**Dara***Daucus carota*

Lacy, delicate blooms in shades of elegant blush to deep burgundy, depending on when it is harvested in the season. Tall sturdy stems make it a fantastic cut flower.

A ✨ 3'-4' tall

#1416 \$4.29 30 seeds

**Green Mist***Ammi visnaga*

Create striking bouquets with this must-have cutting flower. Crisp, light green and white, lacy flower heads complement every color scheme. A great dried flower, too.

A ✨ 3'-4' tall

#1415 \$1.99 100mg (~120 seeds)

**ASTER***Callistephus chinensis*

Blooms midsummer to fall.

**China Aster Blend**

These delightful, daisy-like flowers are a treat for the eyes with blooms that open to reveal a stunning range of candy colors. Gorgeous cut flowers!

H • A ✨ 24"-30" tall

#1300 \$2.29 1g (~360 seeds)

**BACHELOR'S BUTTON***Centaurea cyanus*

Blooms summer. Attracts pollinators. Edible flowers.

**Black Magic**

This drought-tolerant, black (deep maroon) flower will combine magically with blue bachelor's buttons, tall cosmos, yellow coreopsis, or delphiniums. Delightful cut flower.

H • A ✨ 20"-24" tall

#1075 \$2.29 1g (~180 seeds)

**Blue Boy**

A profusion of sky blue flowers in the garden will bring weeks of delight! A honeybee and cut-flower favorite.

H • A ✨ 24"-36" tall

#1002 \$1.99 2g (~310 seeds)

**Tall Blend**

This care-free flower adds vertical interest and an array of colors to the garden! Excellent dried or cut flower.

H • A ✨ 24"-36" tall

#1176 Conventional \$1.99

2g (~350 seeds)

#2058 Organic \$2.69

500mg (~90 seeds)

**BEE BALM***Monarda sp.*

Blooms summer. Attracts pollinators. Edible flowers.

**Lambada**

This garden treasure is a delightful combination of lavender flower clusters and the pleasant aroma of mint- and basil-scented leaves. Unique cut flower.

A ✨ 24"-36" tall

#1085 \$2.49 50mg (~80 seeds)

**BELLS OF IRELAND***Moluccella laevis*

Blooms summer.

Tall spikes of apple-green

"bells" are perfect for

the back of the border!

A stunning cut or dried

flower with a beautiful scent.

H • A ✨ 24"-36" tall

#1148 \$1.99 500mg (~60 seeds)

**BLACK-EYED SUSAN***Rudbeckia hirta*

Blooms summer to frost. Attracts pollinators.

Bright, cheery color! Perfect for wildflower areas as it is drought tolerant, self-sowing, and attracts bees and butterflies to the garden. Excellent cut flower.

N • P ✨ 24"-36" tall

#1003 \$1.99 500mg

(~1,520 seeds)

**Cherokee Sunset**

The warm, sunset colors of this award winner will grace the garden all summer long, then attract birds to the seed heads in fall. A spectacular cut flower and an All-America Selections award winner.

H • T ✨ 24"-30" tall

#1338 \$3.49 20 seeds

**key**

☀️ FULL SUN: 6-8 hours direct sun    ☀️ PART SHADE: 3-6 hours direct sun    💧 DROUGHT TOLERANT  
 A=Annual P=Perennial B=Biennial T=Tender Perennial H=Heirloom N=Native DR=Disease Resistance

**Indian Summer**

Spectacular 6"-9" blooms shine like golden stars! Award-winner in the U.S. and Europe for good reason. Stunning cut flower. P ✨ 36"-42" tall  
#1305 \$2.69 50mg (~46 seeds)

**BLACK-EYED SUSAN VINE**

*Thunbergia alata*

Blooms summer to frost. Vigorous vine with charming orange, yellow, and white flowers. Great ground cover, screen, or hanging basket vine. H • A ✨ ✨ 5'-8' vines  
#1119 \$2.49 20 seeds

**BLUEBELLS**

*Phacelia campanularia*

Blooms spring. Attracts pollinators.

**California Bluebells**  
A magnificent wildflower. Very easy to grow and quick to bloom! Cold tolerant. N • A ✨ ✨ 8"-16" tall  
#1108 \$2.49 1g (~1,600 seeds)

**BLUEBONNET**

Blooms spring. Attracts pollinators.

*Lupinus texensis*  
Dressed to the nines in royal blue, the state flower of Texas is breathtaking when planted in mass. An important host plant for butterflies. N • A ✨ 12"-24" tall  
#1043 \$2.69 2g (~51 seeds)

**Sundial Lupine**

*Lupinus perennis*  
One of six official Texas bluebonnets, these tall pillars of blossoms reflect the beauty of the sky. An important host plant for butterflies. N • P ✨ 24"-36" tall  
#1287 \$2.49 1.5g (~55 seeds)

**BUTTERFLY FLOWER**

See pg 45

**CALENDULA | POT MARIGOLD**

*Calendula officinalis*



Blooms spring to frost. Attracts pollinators. Edible flowers.

**Oopsy Daisy**

As dazzling as sunshine, these unique bi-color blooms make people smile when they pass by. Petite plants are stunning in flower borders, containers, and bouquets! A ✨ 8" tall  
#1313 \$2.99 700mg (~50 seeds)

**Pacific Beauty Blend**

So many uses, it's like growing gold in the garden! Flowers bloom for months, even in cool weather. H • A ✨ 12"-24" tall  
#1069 \$1.99 1.5g (~180 seeds)

**Resina**

More than just a pretty face! High-resin flowers are preferred for making natural fabric dyes and herbal remedies. Also pretty in a bouquet. A ✨ 24" tall  
#2042 Organic \$2.69 450 mg (~33 seeds)

**Zeolights**

An ornamental superstar! Stunning color changes as the blossoms mature. Gorgeous, fully double blooms make long-lasting cut flowers. A ✨ 12"-24" tall  
#2009 Organic \$2.69 400mg (~29 seeds)

**CANTERBURY BELLS**

*Campanula medium*



Blooms spring to summer. Attracts pollinators.

**Storybook Blend**

Tall, beautiful flower spikes with bell-shaped blossoms are reminiscent of a storybook English cottage garden. Long-lasting cut flower. H • B ✨ ✨ 24"-36" tall  
#1004 \$1.99 500mg (~800 seeds)



**CARDINAL CLIMBER***Ipomoea sloteri*

Blooms summer to frost.

Attracts pollinators.

Fabulous lacy, fern-like foliage is as interesting as the dainty 2" red, tubular flowers. Fast growing vine that calls in the hummingbirds.

H • A ✨ 6'-20" vines

#1155 \$2.29 1.5g (~46 seeds)

**CARNATION***Dianthus caryophyllus*

Blooms summer. Edible flowers.

**Chabaud Blend**

This gorgeous blend of colorful carnations will delight the senses with sweet, clove fragrance.

Classic cut flower.

H • P ✨ 18" tall

#1005 \$2.49 350mg (~140 seeds)

**CASTOR BEAN***Ricinus communis*

Blooms summer to frost.

**Impala**Exotic, tropical plant with dark bronze foliage creates a dramatic garden backdrop or a statement when grown center-stage. Fast growing. *All plant parts are toxic if ingested.*

T ✨ 4'-6' tall

#1181 \$2.69 4g (~6 seeds)

**CELOSIA**

Blooms summer to frost. Attracts pollinators.

**Chief Red Flame***Celosia argentea* var. *cristata*

This intensely red cockscomb sets gardens and bouquets aflame.

At 2"-7" wide, it is an excellent bouquet flower that holds its color when dried. Heat and drought tolerant.

A ✨ 16"-30" tall

#2000 Organic \$2.49 30 seeds

**Flamingo***Celosia spicata*

Gardens come alive as these feathery flower spikes gracefully dance with every breeze. Gorgeous in bouquets!

A ✨ 24"-30" tall

#1299 \$2.29 150mg

(~120 seeds)

**Pampas Plume Tall Blend***Celosia argentea* var. *plumosa*

Colorful, feather-like plumes and equally attractive foliage makes a bold statement in the garden. Stunning cut or dried flower.

A ✨ 30"-40" tall

#1405 \$2.29 300mg (~48 seeds)

**CHINESE LANTERN***Physalis alkekengi*

Blooms summer.

Bright orange, papery lanterns will glow in the garden! Ideal for fresh and dried arrangements.

H • P ✨ 12"-24" tall

#1186 \$2.29 150mg

(~70 seeds)

**CHOCOLATE FLOWER***Berlandiera lyrata*

Blooms summer to frost. Attracts pollinators.

This plant may either satisfy or intensify a craving for chocolate!

Bright yellow blooms attract butterflies, and the chocolate aroma makes it irresistible.

N • P ✨ 10"-20" tall

#1198 \$4.29 150mg

(~19 seeds)

**CLEOME | SPIDER FLOWER***Tarenaya hassleriana*

Blooms summer to frost. Attracts pollinators.

**Fountain Blend**

Dramatic spikes topped with stunning flower clusters create a visual feast in the summer garden. Flowers add interest and texture to bouquets. Plants are heat- and drought-tolerant.

H • A ✨ 3'-5' tall

#2047 Organic \$2.69

300mg (~110 seeds)

**COLEUS***Plectranthus scutellarioides***Rainbow Blend**

Dramatic, large foliage for shaded areas with a wide range of fabulously bright tropical colors. Excellent houseplant, too!

H • A ✨ 12"-36" tall

#1006 \$2.69 150mg (~420 seeds)



## COLUMBINE



Blooms spring to early summer. Attracts pollinators.

**McKana Giants Blend**

*Aquilegia cultorum*

Graceful flowers in a beautiful range of colors conceal nectar for only those lucky enough to reach it, such as hummingbirds and sphinx moths. All-America Selections winner.

H • P \* \* 24"-36" tall

#1007 \$2.49 200mg (~130 seeds)

**Rocky Mountain Blue**

*Aquilegia coerulea*

An iconic wildflower native to the west is as at home in the cutting-flower garden as it is in the mountains. Attracts hummingbirds.

N • P \* \* 12"-24" tall

#1008 \$2.29 150mg (~140 seeds)



## COREOPSIS



Blooms summer to frost. Attracts pollinators.

**Double Sunburst**

*Coreopsis lanceolata*

Sunny, double flowers bring sunshine to the garden. This water-wise beauty tolerates poor soil and blooms for a long time. Deer resistant to boot!

P \* \* 18"-24" tall

#1009 \$2.29 800mg (~260 seeds)

**Incredible! Swirl** NEW

*Coreopsis tinctoria*

Colorful, swirling blooms atop wispy, delicate plants. An "incredible" cut flower, and easy to grow.

A \* \* \* 3'-4' tall

#1349 \$2.49 50mg (~150 seeds)

**Plains Coreopsis**

*Coreopsis tinctoria*

This prairie wildflower sports sunny yellow blooms with mahogany centers that call out to pollinators. Blooms and delicate foliage bring movement to beds and bouquets.

N • A \* \* \* 12"-24" tall

#1411 \$1.99 100mg (~180 seeds)



## COSMOS

*Cosmos bipinnatus* (unless noted)



Blooms summer to frost. Attracts pollinators.

**Apricotta** NEW

Delicate, apricot-pink blossoms on tall stems, great for cutting. 2021 Fleuroselect Novelty Award winner.

A \* \* 32"-42" tall

#1350 \$3.49 30 seeds

**Bright Lights Blend**

*Cosmos sulphureus*

Low maintenance and "landing lights" for butterflies! Their symmetry inspired Spanish missionaries to name them cosmos—the Greek word for "ordered universe".

H • A \* \* 3' tall

#1049 \$1.99 1g (~100 seeds)

**Candystripe**

The markings on 'Candystripe' are unique and vary with each flower! Drought tolerant and a beautiful cut flower that attracts butterflies and bees.

A \* \* 3'-6' tall

#1147 \$1.99 500mg (~60 seeds)

**Diablo**

*Cosmos sulphureus*

One devil of a beauty! Fiery-orange, semi-double blooms light up the garden and call out to pollinators. A 1974 All-America Selections award winner.

H • A \* \* 4'-5' tall

#2050 Organic \$2.69 500mg (~60 seeds)

**Double Click Blend**

This award-winning, frilly, and colorful, double cosmos is a showstopper in the flower garden and looks spectacular in bouquets. Easy to grow!

A \* \* 24"-36" tall

#1307 \$3.49 25 seeds

**Rubenza**

Be dazzled by these bold wine and rich, dusky rose-toned blooms. This Fleuroselect award winner adds drama to bouquets and garden beds.

A \* \* 24"-32" tall

#1246 \$2.69 300mg (~29 seeds)



## key

\* FULL SUN: 6-8 hours direct sun    \* PART SHADE: 3-6 hours direct sun    DROUGHT TOLERANT  
A=Annual P=Perennial B=Biennial T=Tender Perennial H=Heirloom N=Native DR=Disease Resistance

**Sea Shells Blend**

Ruffled and rolled seashell-like petals dance above delicate foliage, luring butterflies and hummingbirds.

H • A ☼ 3'-5' tall

#1073 Conventional \$1.99

500mg (~60 seeds)

#2034 Organic \$2.69

500mg (~60 seeds)

**Sensation Blend**

A truly sensational blend of charming colors, this cheerful plant blooms all summer long. All-America Selections award winner.

H • A ☼ 3'-6' tall

#1010 Conventional \$1.99

1g (~120 seeds)

#2035 Organic \$2.69

400mg (~50 seeds)

**Xanthos**

A charming beauty in soft, lime-yellow and early to flower. Great cutting flowers and compact for containers, this Fleuroselect award winner has a lot to offer!

A ☼ 20"-25" tall

#1264 \$3.49 25 seeds

**COTTAGE PINKS**

*Dianthus plumarius*

Blooms spring. Attracts pollinators.

**Rainbow Loveliness**

Unique, lacy flower petals with a intoxicating jasmine-like fragrance.

H • P ☼ 12"-18" tall

#1280 \$1.99 100mg

(~120 seeds)

**CRASPEDIA**

*Pycnosorus globosus*

Blooms summer. Attracts pollinators.

**Drumstick Flower**

Bold, yellow globes rise high above the silvery foliage like a village of lollipops! Excellent, long-lasting cut or dried flower that is heat and drought tolerant.

H • T ☼ 24"-30" tall

#1333 \$2.69 80mg (~110 seeds)

**CUP AND SAUCER VINE**

*Cobaea scandens*

Blooms midsummer to frost.

**Blue Cathedral Bells**

Vigorous vines with honey-scented flowers. A gorgeous cover for a fence or trellis! Generally pest free.

H • A ☼ 10'-17' vines

#1268 \$2.99 1g (~13 seeds)

**CYPRESS VINE**

*Ipomoea quamoclit*

Blooms summer to frost.

**Funny Valentine Blend**

Lovely fern-like foliage and charming tubular flowers. Excellent vine for creating a privacy screen. Attracts hummingbirds. May overwinter in frost-free areas.

H • A ☼ 6'-20' vines

#1175 \$2.29 750mg (~21 seeds)

**DAHLIA**

*Dahlia pinnata*

Blooms summer to frost. Attracts pollinators. Edible flowers.

**Cactus Flowered Blend**

Curled and quilled petals form radiant double and semi-double blooms. Bold, large, colorful flowers on sturdy stems are perfect for cutting.

T ☼ 3'-4" tall

#1351 \$2.69 400mg (~55 seeds)

**Decorative Double Blend**

Grow these 3", colorful head-turners from seed! Long-stemmed, partial and fully double dahlias bloom in just a few months and are such a delight in fresh bouquets.

T ☼ 5" tall

#1166 \$2.49 500mg (~50 seeds)

**DELPHINIUM**

Blooms late spring to summer. Attracts pollinators.

**Butterfly Blend**

*Delphinium grandiflorum*

Delicate spires covered with blossoms adorn these compact plants, loved by bees, birds, and butterflies. You will love them as cut flowers, too.

H • P ☼ 12"-16" tall

#1222 \$2.49 200mg (~160 seeds)

**key**

☼ FULL SUN: 6-8 hours direct sun ☼ PART SHADE: 3-6 hours direct sun ☼ DROUGHT TOLERANT  
A=Annual P=Perennial B=Biennial T=Tender Perennial H=Heirloom N=Native DR=Disease Resistance

**Pacific Giants Blend***Delphinium elatum*

Unbelievably rich colors on statuesque flowers.

Add these towering beauties for a striking backdrop in your landscape or as a cut flower in an arrangement.

H • P ✨ 3'-6' tall

#1014 \$2.49 200mg (~80 seeds)

**ECHINACEA***Echinacea purpurea*

Blooms summer to frost. Attracts pollinators.

**Purple Coneflower**

This long-blooming, drought-tolerant plant adds late summer color and winter interest. A stately cut flower that attracts butterflies.

N • P ✨ ✨ 3'-4' tall

#2044 Organic \$2.49  
400mg (~85 seeds)**White Swan**

Elegant, sparkling white accent for the garden in summer. Seed heads are fabulous for winter interest, and birds love them, too! Excellent cut flower.

P F ✨ 24"-36" tall

#1220 \$2.99 300mg (~43 seeds)

**FEVERFEW***Tanacetum parthenium*

Blooms summer.

Attracts pollinators.

Charming clusters of small, daisy shaped flowers on aromatic, bushy plants. Long-blooming, easy to grow, and a lovely cut flower.

H • P ✨ 12"-24" tall

#1346 Conventional \$1.99  
200mg (~1,200 seeds)#2005 Organic \$2.49  
150mg (~900 seeds)**FLAX**

Attracts pollinators.

**Blue and Breezy***Linum perenne*

Blooms spring to summer.

Graceful clusters of long-lasting sky-blue flowers on drought-resistant plants. Perfect for colorful wildflower areas.

H • P ✨ ✨ 18"-30" tall

#1016 \$1.99 1g (~520 seeds)

**Scarlet***Linum grandiflorum*

Blooms spring to frost.

Care-free, charming scarlet flowers bloom on elegant, swaying stems.

Ideal for hot, dry gardens.

H • A ✨ ✨

12"-24" tall

#1265 \$2.49 1.5g  
(~320 seeds)**FLOWER MIX**

Assorted species

Blooms spring to frost. Attracts pollinators.

**Bring Home the Butterflies**

Imagine the joy of seeing more butterflies in your garden! This long-blooming colorful mix supports their lifecycle. Includes 17 annuals, 8 perennials, and 2 biennials.

✨ 12"-72" tall

#1901 Conventional \$3.49

3g (~48 sq. ft.)

#7009 Large \$5.59

10g (~100 sq. ft.)

**California Color**

This custom mix will create a landscape filled with the exuberant beauty of native California wildflowers. Blooms begin in early spring and continue through the season in an ever-changing tapestry of color and form. Includes 14 annuals and 2 perennials.

N ✨ 6"-48" tall

#7022 Large \$6.29

10g (~260 sq. ft.)

**Edible Beauties**

Form and function at its best! This yummy mix of annual and perennial edible flowers bring color throughout the season in a range of spicy and mild flavors to enliven salads, herb butters, and vinegars. Includes 9 annuals and 2 perennials.

✨ 8"-30" tall

#1910 Conventional \$2.99

3g (~20 sq. ft.)

#7026 Large \$5.59

9g (~60 sq. ft.)



**Fairy Meadow**

Create an enchanting garden just for fairies. This unique mix of colorful wildflowers, herbs, and low-growing plants will captivate children and adults alike, and provide a charming home for garden sprites! Includes 8 annuals, 1 biennial, and 7 perennials.

✧ 6"-24" tall

#1902 Conventional \$3.49

3g (~156 sq. ft.)

#7018 Large \$6.29 12g (792 sq. ft.)

**Grandmother's Cut Flower Garden**

A charming mix of tried and true flowers your grandmother might have grown. This mix will provide flowers for cutting from spring until fall.

A range of colors, shapes, and textures to enliven

a whole season's worth of bouquets! Includes 16 annuals, 2 biennials, and 4 perennials.

✧ 18"-48" tall

#1903 Conventional \$2.99

3g (~78 sq. ft.)

#7006 Large \$6.29 10g (~280 sq. ft.)

**Hummingbird Haven**

Calling all hummingbirds! If this mix of showy, bright blooms doesn't catch their attention, nothing will! Each variety an irresistible invitation to imbibe in summer's sweet nectar. Includes 7 annuals, 3 biennials, and 7 perennials.

✧ 6"-48" tall

#1904 Conventional \$3.49

3g (~29 sq. ft.)

#7008 Large \$6.29

10g (~104 sq. ft.)

**Made in the Shade**

Fabulous colors in a mix of groundcovers and tall spires for areas with dappled shade or only a few hours of direct, morning sun. Includes 9 annuals, 2 biennials, and 4 perennials.

✧ 6"-48" tall

#1905 Conventional \$3.49

3g (~130 sq. ft.)

#7005 Large \$6.29

9g (~457 sq. ft.)

**Perennial Bloom**

This fabulous mix of 19 varieties includes flowers from showy to subtle with an enormous array of colors.

✧ 8"-48" tall

#7003 Large \$6.29

8g (~208 sq. ft.)

**Pollinator Garden**

This colorful mix feeds and shelters our pollinator friends all summer long with their favorite sources of food and habitat.

✧ 10"-72" tall

#2039 Organic \$4.29

2g (~20 sq. ft.)

**Prairie Splendor**

Rich hues and warm colors of a native Midwest prairie, irresistible to bees and butterflies, and great cutting flowers.

N ✧ 6"-48" tall

#7023 Large \$6.29

10g (~284 sq. ft.)

**Precious Pollinators**

This vibrant mix of food and nectar plants provides pollinators with sustenance and a place to rest. Includes 10 annuals and 4 perennials.

✧ 1'-6' tall

#1911 Conventional \$3.49

3g (~25 sq. ft.)

#7027 Large \$6.29

10g (~83 sq. ft.)

**Save the Bees**

This colorful mix supplies food for beneficial bee species. Includes 10 annuals, 1 biennial, and 8 perennials.

✧ 18"-60" tall

#1906 Conventional \$3.49

4g (~56 sq. ft.)

#7020 Large \$5.59

12g (~168 sq. ft.)

**Songbird Delight**

This premium mix will grow colorful flowers that turn into plump seed heads, supplying a feast for fascinating songbirds.

✧ 24"-60" tall

#7017 Large \$6.29

40g (~400 sq. ft.)





**Southern Hills & Plains**

From the heart of Texas to the windswept plains of Oklahoma, native wildflowers paint a spectacle of color. Includes 6 annuals, 2 biennials, and 5 perennials.

N ✨ 6"-48" tall

#7024 Large \$6.29  
8g (~150 sq. ft.)

**Three-Season Bloom**

Light up any sunny spot with the sparkle and flair of these flowers specially selected for their bright colors and showy blossoms. An explosion of color begins soon after plants emerge and continues until frost. Includes 11 annuals and 2 perennials.

✨ 4"-30" tall

#1908 Conventional \$3.49  
3g (~108 sq. ft.)

#7025 Large \$5.59 8g (~288 sq. ft.)

**Water-Wise Garden**

Drought-tolerant and hardy varieties in a palette of beautiful colors. Includes 10 annuals and 9 perennials.

✨ 4"-36" tall

#7002 Large \$6.29  
12g (~226 sq. ft.)

**FORGET-ME-NOT**

*Myosotis sylvatica*

Blooms early spring (unless noted). Attracts pollinators.

**Spring & Summer**

*Myosotis sylvatica*/  
*Cynoglossum amabile*  
Blooms spring and summer.

Long-blooming combo for shady spots! Excellent in rock gardens, scattered around the garden, or as a bulb cover.

H • P/A ✨ 6"-24" tall

#1219 \$2.49 800mg  
(~113 seeds)

**Victoria Blue**

Dainty, blue flowers on compact, mounding plants make a charming bulb cover. A superior strain of one of the earliest spring bloomers.

P ✨ 6"-8" mound

#1121 \$2.29 250mg  
(~320 seeds)

**Victoria Pink**

Pretty pink flowers on compact, mounding plants. Very early blooming, and makes a pretty-in-pink bulb cover.

P ✨ 6"-8" mound

#1122 \$2.29 250mg  
(~320 seeds)

**FOUR O'CLOCK**

*Mirabilis jalapa*

Blooms summer to frost. Attracts pollinators.

**Marvel Of Peru**

Lightly fragrant pink, white, red, and yellow flowers open after 4 PM for late afternoon charm. A lure for butterflies and hummingbirds.

H • T ✨ 24"-48" tall

#1019 \$2.29 2g (~26 seeds)

**FOXGLOVE**

*Digitalis purpurea*

Blooms spring to summer. Attracts pollinators.

**Gloxiniiflora Blend**

Tall, dramatic spires provide striking color and height to the part-shade garden. A stunning cut flower.

H • B ✨ 3'-5' tall

#1020 \$2.29 350mg (~2,800 seeds)

**GAILLARDIA**

*Gaillardia x grandiflora*

Blooms summer to frost. Attracts pollinators.

**Goblin**

Masses of fiery red blooms tipped with flame yellow blanket the garden all summer long. Long-lasting cut flowers.

P ✨ 12"-18" tall

#1127 \$2.29 300mg (~80 seeds)

**GAZANIA**

*Gazania rigens*

Blooms summer. Attracts pollinators.

**Sunshine Blend**

Big and bold, these bright blooms in a myriad of sunrise and sunset colors bring cheer and wonder to the garden, and beckon to bees and butterflies.

T ✨ 12"-18" tall

#1335 \$2.29 250mg (~90 seeds)

**key**

☀️ FULL SUN: 6-8 hours direct sun   ✨ PART SHADE: 3-6 hours direct sun   💧 DROUGHT TOLERANT  
A=Annual   P=Perennial   B=Biennial   T=Tender Perennial   H=Heirloom   N=Native   DR=Disease Resistance

**GOMPHRENA***Gomphrena haageana*

Blooms summer to frost.

**QIS Fiery Sunrise Blend**

Bold, bright colors of intriguing, papery flowerheads are long lasting whether enjoyed in a garden bed or in fresh or dried arrangements.

T ✨ 24"-26" tall

#1408 \$3.49 25 seeds

**GOURD****Birdhouse***Lagenaria siceraria*

Great craft item! These hard-shelled gourds can be transformed into everlasting birdhouses, pots, planters, bowls, or toys. Also attracts hummingbirds.

H • A ✨ 95-110 days

#1256 \$2.99 2.5g (~11 seeds)

**Corsican***Lagenaria siceraria*

What a unique, fun thing to grow! Hard-shell gourds used to make serving bowls, jewelry boxes, and many other beautifully decorated containers.

H • A ✨ 140 days

#1257 \$2.99 2.5g (~11 seeds)

**Luffa***Luffa aegyptiaca*

This unusual gourd is fun to grow and provides long-lasting, eco-friendly, natural sponges!

H • A ✨ 110 days

#1258 \$3.49 2.5g (~20 seeds)

**GRASS**

Blooms summer to frost. Attracts pollinators.

**Blue Grama***Bouteloua gracilis*

Fascinating seedheads rise above short foliage and dance in the breeze. Drought-tolerant, low-maintenance perennial with a unique architectural look adds interest to xeric, rock, or native gardenscapes, as well as dried flower arrangements.

N • P ✨ 12"-20" tall

#1017 \$2.49 1g (~1,280 seeds)

**Bunny Tails***Lagurus ovatus*

Wonderful for flower arrangements; furry flowers are practically shatter-proof. Kids love these fuzzy fun flower heads.

H • A ✨ 10"-20" tall

#1116 \$2.29 300mg (~480 seeds)

**Frosted Explosion***Panicum* sp.

This easy-to-grow grass adds a whimsical burst of shimmering, airy tufts to bouquets, flower beds, and containers. Long-lasting in the vase and when dried.

A ✨ 16"-32" tall

#1407 \$2.29 250mg (~60 seeds)

**HOLLYHOCK***Alcea rosea* (unless noted)

Blooms summer. Attracts pollinators.

**Chater's Double Blend**

Tall, elegant spires of gorgeous peony-shaped double blossoms look outstanding against a fence or wall.

H • B ✨ 5'-8' tall

#1099 \$2.49 500mg (~44 seeds)

**Indian Spring**

Regal, tall spires of old-fashioned single blossoms look striking against a fence or wall. All-America Selections award winner.

H • B ✨ 5'-8' tall

#1022 \$1.99 800mg

(~50 seeds)

**Outhouse***Alcea rosea* and *A. ficifolia*

This cottage garden charmer is a stunning backdrop in the flowerbed. Long bloom period for continual color.

B ✨ 6'-9' tall

#2048 Organic \$2.69

300mg (~22 seeds)

**The Watchman**

These towers of edible, nearly black blossoms are a wicked addition to the back of the flower border, along a fence, or as an accent in a cottage garden.

H • B ✨ 5'-7' tall

#1225 \$2.49 400mg (~29 seeds)

**key**

☀️ FULL SUN: 6-8 hours direct sun   ✨ PART SHADE: 3-6 hours direct sun   💧 DROUGHT TOLERANT  
 A=Annual   P=Perennial   B=Biennial   T=Tender Perennial   H=Heirloom   N=Native   DR=Disease Resistance

**HONEYWORT***Cerinthemajor*

Blooms summer. Attracts pollinators.

**Purple Tear**

A floral wonder of violet and royal-blue flowers on nodding stems are a must-have for fantastic bouquets.

T \* ♀ 16"-32" tall

#1406 \$2.69 2g (~27 seeds)

**HYACINTH BEAN***Lablab purpureus*

Blooms summer to frost.

**Ruby Moon**

Exquisite clusters of amethyst flowers and eye-catching purple pods are unique in arrangements and bouquets. Vines are beautiful rambling among flowerbeds. Contains toxins; not recommended for eating.

H • A \* \* ♀ 10'-20' vine

#1114 \$3.49 3.5g (~10 seeds)

**HYSSOP**

Blooms summer. Attracts pollinators. Edible flowers.

**Anise Hyssop***Agastache foeniculum*

Charming anise-scented herb is a beautiful ornamental. Its edible leaves and long-lasting flowers are wonderful for iced and hot teas. Attracts hummingbirds.

N • P \* \* ♀ 24"-48" tall

#1226 Conventional \$2.29  
250mg (~690 seeds)

#2062 Organic \$2.49 100mg (~270 seeds)

**True Hyssop***Hyssopus officinalis*

Plants explode in mid- and late summer with vibrant purple flowers and the hum of bees feasting on the sweet nectar. Whimsical cut flower.

H • P \* \* ♀ 12"-24" tall

#2029 Organic \$2.49  
150mg (~120 seeds)**ICEPLANT | LIVINGSTONE DAISSY***Cleretum bellidiforme*

Blooms spring to fall. Attracts pollinators.

**Sparkle Blend**

Brilliantly colored, daisy-like flowers atop succulent foliage, thus the name Sparkle Blend. Heat-tolerant garden performer.

H • A \* ♀ 4"-8" tall

#1309 \$1.99 250mg (~640 seeds)

**IMPATIENS***Impatiens walleriana*

Blooms spring to frost.

**Midnight Blend** (hybrid)

Masses of dazzling, velvety, gemstone-colored flowers will turn any dark dreary corner into a bed of luxurious color all summer long!

A \* 8"-12" tall

#1227 \$2.69 50mg (~70 seeds)

**LARKSPUR***Consolida regalis*

Blooms spring to summer.

**Galilee Blend**

A simply breathtaking, trouble-free forest of tall, slender flowers in a rainbow of colors atop a mist of foliage. Vibrant cut flower.

A \* 3'-4" tall

#2036 Organic \$2.49  
750mg (~260 seeds)**Shades of Blue**

Irresistibly beautiful, tall, elegant spires add bright shades of blue to cut and dried flower arrangements.

A \* 3'-4" tall

#1063 \$2.49 750mg  
(~270 seeds)**LAVENDER***Lavandula angustifolia*

Blooms summer. Attracts pollinators. Edible flowers.

**English Tall/Vera**

Lavender has been used through the ages for its calming properties and universally loved fragrance. An excellent cut flower.

H • P \* ♀ 24"-36" tall

#1156 \$2.49 250mg (~220 seeds)

**Munstead**

The heady aroma of this fragrant, compact, English lavender will have you imagining you are standing in the middle of a sunny lavender field. A lovely drought- and heat-tolerant cutting flower and wonderful for crafts.

H • P \* ♀ 12"-18" tall

#2037 Organic \$2.69  
40mg (~30 seeds)

**LILY Blackberry** NEW*Iris domestica*

Blooms summer. Attracts pollinators.

Dainty orange petals freckled with crimson-red spots soar above long, fanned-out leaves. Great cutting flower. Seedheads are also attractive when dried.

H • P ✨ ✨ 24"-36" tall

#1352 \$2.99 20 seeds

**LINARIA***Linaria maroccana*

Blooms heaviest in cool weather. Attracts pollinators.

**Fairy Bouquet**

Garden sprites will be charmed by an abundance of delicate, quick-to-bloom, colorful blossoms that make delightful cut flowers. All-America Selections winner.

H • A ✨ ✨ 8"-15" tall

#1269 \$1.99 200mg (~2,320 seeds)

**LOBELIA***Lobelia erinus*

Blooms spring to frost. Attracts pollinators.

**Cambridge Blue**

Compact plants with stunning light blue flowers massed atop green foliage are a delight to behold in baskets and borders.

H • A ✨ ✨ 4"-6" mound

#1076 \$2.29 125mg (~3,000 seeds)

**Crystal Palace**

Low growing plants with intense, deep blue flowers massed over the top of bronze-tipped foliage. Lovely in containers.

H • A ✨ ✨ 4"-6" mound

#1024 \$2.29 125mg (~3,000 seeds)

**Trailing****Cascade of Color**

A cascade of small jewel-toned flowers on graceful, trailing foliage. Perfect for window boxes, large containers, and hanging baskets.

H • A ✨ ✨ 6"-8" long

#1195 \$2.29 125mg (~3,000 seeds)

**LOVE-IN-A-MIST**

Attracts pollinators.

**African Bride***Nigella hispanica*

Blooms summer to fall.

The pure white petals with contrasting dark cocoa-colored stamens and seed pods float above wispy, green foliage. Simply stunning in the garden and bouquets.

A ✨ ☹ 18"-36" tall

#1324 \$2.49 250mg (~170 seeds)

**Miss Jekyll Blend***Nigella damascena*

Blooms spring.

Delightful flowers floating atop a mist of lacy foliage. The dried seed pods are papery and quite unusual. Great cut flower. Self-sows.

H • A ✨ ☹ 12"-24" tall

#1054 Conventional \$2.29

1g (~340 seeds)

#2053 Organic \$2.99 500mg (~190 seeds)

**LUPINE**

Attracts pollinators.

**Pixie Delight***Lupinus mexicanus*

Blooms spring to summer.

True to its name, this petite lupine produces columns of lightly-fragrant flowers in shades of pink, blue, white, and bicolors.

A ✨ ✨ 12"-18" tall

#1288 \$2.49 1.5g (~70 seeds)

**Russell Blend***Lupinus polyphyllus*

Blooms late spring/summer.

Stately lupines always elicit a "wow!" This colorful array of tall flower spikes takes the breath away!

H • P ✨ ✨ 3'-4" tall

#1025 \$2.69 1.5g (~55 seeds)

**MARIGOLD****African***Tagetes erecta*

Blooms summer to frost. Attracts pollinators.

Edible flowers.

**Crackerjack Blend**

4" blooms in bright citrus colors light up the flowerbed like fireworks! Superior cut flowers bring the sunshine indoors!

H • A ✨ ☹ 24"-36" tall

#1228 Conventional \$1.99

750mg (~180 seeds)

#2059 Organic \$2.99 500mg (~120 seeds)



**Kilimanjaro White**

Like snow on a mountaintop, these unusual, vanilla-white, long-lasting marigolds sparkle in the garden and make delightful cut flowers with a unique, lovely scent that differs from traditional marigolds.

A ✨ 🌧 18" tall

#1026 \$2.69 200mg (~48 seeds)

**Phyllis**

Radiant yellow, petal-packed blooms are like sunshine. Also known as 'Mum Yellow', co-owner Judy renamed this marigold after her mom because of Judy's sweet memories of them planting it together during her childhood.

A ✨ 🌧 24" tall

#1239 \$2.29 100mg (~24 seeds)

**French**

*Tagetes patula*

Blooms spring to frost. Attracts pollinators. Edible flowers.

**Favourite Blend**

Bright mix of yellow, gold, red, and bicolor flowers will lure butterflies to the garden. Compact, lacy plants are wonderful for borders and in containers.

A ✨ 🌧 10"-12" tall

#1247 \$2.29 500mg (~140 seeds)

**Lemon Drop**

Sunny 1" lemon-yellow flowers on dwarf plants are great in containers, borders, and planted in mass. Dainty cut flower.

A ✨ 🌧 6"-12" tall

#1068 \$1.99 1g

(~240 seeds)

**Naughty Marietta**

This award-winning, compact beauty is quick to bloom. Its bright, cheery colors and low maintenance make it a popular choice for every garden.

H • A ✨ 🌧 8"-12" tall

#1285 \$1.99 500mg

(~140 seeds)

**Red Metamorph**

Blooms summer to frost.

A magical marigold, as the temperatures get warmer, the blooms morph from solid burgundy to striped with yellow.

A ✨ 🌧 24"-36" tall

#2041 Organic \$2.69

150mg (~36 seeds)

**Signet**

*Tagetes tenuifolia*

Blooms summer to frost. Attracts pollinators. Edible flowers.

**Gem Blend**

This blend of petite, tidy, edible marigolds bloom prolifically over fine foliage all summer and are drought tolerant. Bring the cheer indoors in dainty bouquets or to garnish dinner.

H • A ✨ 🌧 8"-12" tall

#2011 Organic \$2.69

100mg (~100 seeds)

**Lemon & Tangerine Gems**

Brilliant masses of dainty flowers on compact, fragrant plants with lacy foliage. Summer-long color for borders and containers. Petite cut flower.

H • A ✨ 🌧 8"-12" tall

#1189 \$1.99 150mg (~140 seeds)

**MEXICAN SUNFLOWER** See pg 52**MILKWEED | BUTTERFLY FLOWER**

Blooms summer. Attracts pollinators.

*Asclepias tuberosa*

Vivid, red-orange flowers attract majestic monarchs and other colorful butterflies. Essential for wildflower and butterfly gardens.

N • P ✨ 🌧 24"-36" tall

#1146 \$2.49 150mg (~24 seeds)

**Common Milkweed**

*Asclepias syriaca*

Lovely pink flowers provide nectar and habitat for monarch butterflies, their caterpillars, and other pollinators. Beauty and sweet scent is an added bonus!

N • P ✨ 🌧 24"-36" tall

#1319 Conventional \$2.69

150mg (~23 seeds)

#2063 Organic \$3.49 150mg (~23 seeds)

**key**

☀️ FULL SUN: 6-8 hours direct sun  
A=Annual P=Perennial B=Biennial

☀️ PART SHADE: 3-6 hours direct sun  
T=Tender Perennial H=Heirloom

💧 DROUGHT TOLERANT  
N=Native DR=Disease Resistance

**Hello Yellow***Asclepias tuberosa*

Well, hello yellow! This sunny yellow, native milkweed was found growing in the Colorado wild. A drought-tolerant butterfly magnet and lovely in a vase.

N • P ☼ 18"-24" tall  
#1168 \$3.49 150mg (~19 seeds)

**Irresistible Blend***Asclepias incarnata*

Clusters of pink and white flowers with a soft vanilla scent tempt butterflies, hummingbirds, and beneficial insects to the garden. Also called swamp milkweed.

N • P ☼ 3'-5' tall  
#1243 \$2.49 150mg (~24 seeds)

**Narrowleaf***Asclepias fascicularis*

A favorite of pollinators and especially important for monarch butterflies in the Western US. Also known as Mexican whorled milkweed, this drought tolerant beauty also thrives in moist conditions.

N • P ☼ 20"-40" tall  
#1332 \$2.69 150mg (~33 seeds)

**Showy Milkweed***Asclepias speciosa*

Clusters of star-like flowers have a sweet scent and provide nectar, food, and habitat for monarch butterfly caterpillars.

N • P ☼ 24"-72" tall  
#1320 \$2.49 150mg (~23 seeds)

**MONEY PLANT***Lunaria annua*

Blooms spring to early summer. Attracts pollinators.

**Honesty**

An old-fashioned garden favorite! The unusual seed pods shimmer like silvery, translucent "coins". Perfect for dried bouquets!

H • B ☼ 18"-36" tall  
#1180 \$2.99 650mg (~26 seeds)

**MOONFLOWER***Ipomoea alba*

Blooms summer to frost. Attracts pollinators.

Twisted buds unfurl at dusk to reveal huge, white, deliciously fragrant blossoms against large, heart-shaped leaves.

H • T ☼ 10'-20' vines  
#1100 \$2.69 5g (~18 seeds)

**MORNING GLORY**

Blooms summer to frost.

**Chocolate***Ipomoea nil*

This plant won't grow true chocolate in the garden, but it will be covered with deliciously beautiful flowers.

A ☼ 8'-10' vines  
#1213 \$3.49 500mg (~8 seeds)

**Flying Saucer***Ipomoea tricolor*

'Flying Saucer' is out of this world! Stripes of sky blue radiate on a pure white background with a soft lemon-yellow throat.

H • A ☼ 10' vines  
#1162 \$2.49 1.5g (~36 seeds)

**Grandpa Ott's***Ipomoea purpurea*

An old-fashioned variety in royal purple to brighten the garden. Brought to America from Bavaria in the 1870s.

H • A ☼ 8'-10' vines  
#1154 \$2.29 1.5g (~36 seeds)

**Heavenly Blue***Ipomoea tricolor*

Glorious, 4"-5" sky-blue flowers. A heavenly burst of cool, refreshing color to summer trellises, pots, and baskets.

H • A ☼ 15' vines  
#1027 \$2.29 2g (~48 seeds)

**Pinwheel Blend***Ipomoea purpurea*

This sweet blend creates an ever-changing wall of color, presenting a new array of blossoms daily.

H • A ☼ 9'-10' vines  
#2054 Organic \$2.69 25 seeds

**key**

☼ FULL SUN: 6-8 hours direct sun ☼ PART SHADE: 3-6 hours direct sun 💧 DROUGHT TOLERANT  
A=Annual P=Perennial B=Biennial T=Tender Perennial H=Heirloom N=Native DR=Disease Resistance

**Something Old,  
Something New***Ipomoea purpurea,**Ipomoea tricolor*

A beautiful way to quickly

cover an arbor or fence!

Five heirlooms, and  
the pretty, irresistible, pink  
and white 'Shiva'.

A ✨ 8'-15' vines

#7203 Large \$5.59 6g (~180 seeds)

**Sunrise Blend***Ipomoea purpurea*A stunning, colorful blend of  
several varieties, these fast-  
growing vines are super in  
hanging baskets, on fences,  
and trellises all summer long.

A ✨ 8'-10' vines

#1086 \$2.29 2g (~60 seeds)

**NASTURTIUM***Tropaeolum majus* (unless noted)

Blooms late spring to frost. Attracts pollinators.

Edible flowers.

**Alaska Variegated**Delicious as well as beautiful,  
colorful blooms float above  
variegated lily-pad leaves on  
compact plants.

H • A ✨ 10"-12" tall

#1172 \$2.49 3g (~19 seeds)

**Black Velvet***Tropaeolum minus*Striking, rich ruby blossoms  
against round, green leaves  
create a wondrous vision.  
Contrast with light-colored  
flowers to feature the drama!

A ✨ 10"-12" tall

#1328 \$2.99 3g (~22 seeds)

**Butterscotch**Sweet blossoms in rich  
tones of creamy white  
and buttery yellow to  
butterscotch-orange on compact  
plants, ideal for containers.

A ✨ 10"-12" tall

#1336 Conventional \$3.49

3g (~19 seeds)

#7236 Large \$6.29 9g (~58 seeds)

New Large Packet

**Cherry Rose Jewel**A profusion of cheery,  
cherry red, luminous  
blossoms will delight  
both the eyes  
and the palate!

A ✨ 10"-12" tall

#1107 \$2.49 3g (~19 seeds)

**Fiesta Blend**It's a party! An explosion of  
fiery-colored edible flowers for  
borders, containers, or a spark  
of color in the vegetable patch.

H • A ✨ 10"-12" tall

#2026 Organic \$2.99

2g (~13 seeds)

#7500 Organic Large \$6.29

8g (~50 seeds)

**Jewel Blend**Colorful jewels add bling to  
the garden! Surprisingly easy  
to grow with lovely, edible  
flowers; charming in hanging  
baskets and on salads!

A ✨ 10"-12" tall

#1028 \$2.49 3g (~19 seeds)

**Peach Melba**Peachy-yellow flowers with  
raspberry red centers float  
above green, lily pad-  
shaped foliage. Edible  
flowers and leaves.

A ✨ 10"-14" tall

#1050 \$2.49 3g (~19 seeds)

**Single Blend**A charming, vibrant-colored,  
trailing mix for hanging  
baskets, ground cover, or  
gracing a rock wall.

H • A ✨ 5'-6' vines

#1029 \$2.29 3g (~22 seeds)

**NICOTIANA**

Blooms summer to frost. Attracts pollinators.

**Indian Peace Pipe***Nicotiana glauca*Fragrant, 3"-long white  
flowers glow in the moonlight  
as they perfume the evening  
air with a soft, sweet  
jasmine scent. Uniquely  
shaped cut flower.

H • A ✨ 4'-6' tall

#1120 \$1.99 150mg

(~3,600 seeds)

**ORLAYA***Orlaya grandiflora*

Blooms summer. Attracts pollinators.

**White Lace**Prolific snow-white  
blossoms with ferny foliage  
are superior to Queen  
Anne's lace. Delicate,  
lacy, cut flower.

A ✨ 18"-30" tall

#1279 \$2.99 20 seeds



**PAINTED DAISY***Tanacetum coccineum*

Blooms spring to early summer. Attracts pollinators.

**Robinson's Blend**

Brightly colored 3"-wide daisy-shaped flowers are show-stoppers! Fern-like foliage and long stems make it a wonderful cut flower.

P ✨ ✨ 24"-36" tall

#1080 \$2.29 250mg (~140 seeds)

**PANSY***Viola wittrockiana*

Blooms heaviest in cool weather. Frost-tolerant. Edible flowers.

**Got the Blues**

A joyous blend of blue-toned pansies sure to chase away the blues. Frost hardy plants bloom over a long time for continuous color.

P ✨ ✨ 6"-8" tall

#1151 \$2.49 200mg (~130 seeds)

**Swiss Giants Blend**

Fantastic 1½"-2" blooms in a rainbow of colors. These cheery, edible flowers are one of the first in spring and the last in fall.

H • P ✨ ✨ 6"-9" tall

#1030 \$2.49 200mg (~130 seeds)

**PENSTEMON**

Attracts pollinators and hummingbirds.

**Dazzler Blend***Penstemon barbatus*

Blooms spring to summer.

A wonderful dwarf penstemon blend of soft rose, pink, blue, and purple hues. Sturdy stems perfect for cut flowers. A must-have for rock gardens!

P ✨ 12" tall

#1098 \$2.29 150mg (~170 seeds)

**Rocky Mountain Blue***Penstemon strictus*

Blooms early summer.

Intense, blue-violet flower spikes filled with sweet nectar for hummingbirds and butterflies. Makes gorgeous cut flowers!

N • P ✨ ✨ 24"-36" tall

#1111 \$2.29 350mg (~300 seeds)

**PETUNIA***Petunia x atkinsiana*

Blooms spring to frost. Attracts pollinators.

**Petite Charmer Blend**

Numerous bell-shaped, brightly colored blooms practically glow against the green foliage on delightfully lush, petite plants.

A ✨ 8"-14" tall

#1337 \$1.99 50mg (~320 seeds)

**PHLOX***Phlox drummondii*

Bloom summer to frost. Attracts pollinators.

**Grandiflora Starry Eyes Blend**

Showy, lightly fragrant, bicolor blooms. A colorful, long-lasting cut flower that pollinators also adore!

A ✨ ✨ 18"-20" tall

#1150 \$2.49 200mg (~80 seeds)

**POPPY****Bread Seed***Papaver somniferum*

Blooms late spring (unless noted). Attracts pollinators.

**Black Swan**

Blooms summer.

A show-stopping poppy with deep burgundy, frilly petals; makes a dazzling cut flower.

A ✨ ✨ 24"-36" tall

#1312 \$2.29 200mg (~480 seeds)

**Hungarian Blue**

Fluttery, crepe paper-like lavender flowers dance in the spring breeze. The dried seed pods can be used for decorations, and the seeds for baking.

H • A ✨ 24"-36" tall

#2008 Organic \$2.69 250mg (~500 seeds)

**Lauren's Grape**

Seductive, dark purple-violet blooms elicit "oohs" and "aahs." An exquisite flower, also self-sows.

A ✨ 24"-36" tall

#2030 Organic \$2.49 150mg (~360 seeds)





**Peony Double Blend**

A confection of candy colors, these scene-stealing, 3"-5" double poppies with ruffled petals are heavenly in the garden!

H • A ✨ ☼ 24"-36" tall  
#1231 \$2.29 1g (~1,920 seeds)

**California Poppy**

*Eschscholzia californica*

Blooms spring to frost. Attracts pollinators.

**Mikado**

Exquisite orange-red flowers set your garden ablaze with color. Spectacular in mass plantings and wildflower areas. Often reseeds.

T ✨ ☼ 6"-12" tall  
#1031 \$2.49 1g (~520 seeds)

**Mission Bells**

A drought tolerant confetti of bright color! This blend of double and semi-double poppies is heavenly in mass plantings. The more the merrier!

T ✨ ☼ 9"-18" tall  
#1090 Conventional \$2.29  
1g (~520 seeds)  
#2043 Organic \$2.99  
700mg (~360 seeds)  
#7212 Large \$5.59  
6g (~3,100 seeds)

Now Organic!

**Orange**

The state flower of California is stunning in mass plantings and wildflower meadows. Early explorers called poppy-covered hillsides "Land of Fire."

N • T ✨ ☼ 6"-12" tall  
#1032 Conventional \$2.49  
2g (~1,040 seeds)  
#2033 Organic \$2.99  
750mg (~390 seeds)  
#7200 Large \$5.59  
10g (~5,200 seeds)

**Corn**

*Papaver rhoeas*

Blooms spring and summer.

**Amazing Grey**

Stunning, award-winning, quick-to-bloom poppy that has been 18 years in the making. The steely, moody color in the garden will have neighbors stopping in their tracks!

A ✨ ☼ 15"-27" tall  
#1281 \$2.29 50mg (~300 seeds)

**American Legion**

A symbol of wartime sacrifice grown for remembrance and its striking beauty.

H • A ✨ ☼ 12"-14" tall  
#1215 \$2.29 1g (~5,600 seeds)

**Shirley Single Blend**

Silky blossoms, like delicate tissue paper, are the essence of spring! When bulb flowers fade, Shirley steps in with her sweet colors.

H • A ✨ ☼ 24"-36" tall  
#1174 \$2.29 1g (~7,200 seeds)

**Iceland**

*Papaver nudicaule*

Blooms spring to early summer.

**Nudicaule Blend**

Brightly colored flowers on graceful, long, and slender stems. Scatter seeds for early color. Sweetly scented and dainty cut flower.

P ✨ ✨ ☼ 12"-24" tall  
#1033 \$2.49 400mg (~2,560)

**Oriental**

*Papaver orientale*

Blooms late spring to early summer.

**Brilliant**

These striking scarlet poppies are like fireworks when they burst into bloom with unabashed color! Large blooms and decorative seed pods.

P ✨ ☼ 24"-36" tall  
#1304 \$2.29 200mg (~640 seeds)

**Oriental Blend**

Large, silky, bowl-shaped flowers with a burst of intense color will be stunning in the spring garden. Attracts bees!

H • P ✨ ☼ 24"-48" tall  
#1034 \$2.49 400mg (~1,280 seeds)

**PORTULACA | MOSS ROSE**

*Portulaca grandiflora*

Blooms summer to fall.

**Double Blend**

Covered with small, colorful, rose-like flowers, an ideal plant for hot, dry sites. Use in rock gardens, hanging baskets, or as a ground cover.

H • A ✨ ☼ 4"-8" tall  
#1067 \$2.29 250mg (~700 seeds)

**key**

☼ FULL SUN: 6-8 hours direct sun ☼ PART SHADE: 3-6 hours direct sun ☼ DROUGHT TOLERANT  
A=Annual P=Perennial B=Biennial T=Tender Perennial H=Heirloom N=Native DR=Disease Resistance

**SALPIGLOSSIS***Salpiglossis sinuata*

Blooms summer. Attracts pollinators.

**Superbissima Blend**

Flowers with metallic coloration and veination have to be seen to be believed! Fabulous cutting flowers; plants thrive in cool weather.

H • A ✨ ✨ 🌧 24"-36" tall

#1306 \$2.49 300g (~960 seeds)

**SALVIA**

Blooms summer to frost. Attracts pollinators.

**Blue Victory***Salvia farinacea*

Lovely spikes of violet-blue flowers cover this royalty of salvias. Great for container plantings. Beautiful as a cut or dried flower.

T ✨ ✨ 🌧 20" tall

#1060 \$2.29 100mg

(~75 seeds)

**Violet Queen***Salvia x superba*

Violet flower spikes rise above fragrant foliage on this prolific, summer bloomer with a wonderful scent.

P ✨ ✨ 24" tall

#1341 \$2.29 150mg (~110 seeds)

**SCABIOSA | PINCUSHION FLOWER**

Blooms summer to frost. Attracts pollinators.

**Black Knight***Sixalix atropurpurea*

These long-blooming deep-maroon flowers attract butterflies.

The sweetly-scented blooms on long stems make great cut flowers.

H • A ✨ ✨ 🌧 12"-30" tall

#1325 \$2.69 25 seeds

**Isaac House Blend***Lomelosia caucasica*

Charming beauty that produces long-stems developed specifically for cut flowers to continually supply summer bouquets.

H • P ✨ ✨ ✨ 🌧 18"-30" tall

#1104 \$2.69 25 seeds

**Starflower***Lomelosia stellata*

Translucent, papery cups cradling a five-pointed dark star are astronomical wonders in dried arrangements. Fresh flowers are also lovely in bouquets.

A ✨ ✨ 🌧 18"-24" tall

#1334 \$2.49 1g (~24 seeds)

**SEA HOLLY***Eryngium planum*

Blooms summer to frost. Attracts pollinators.

**Steel Blue**

Long-lasting, steely-blue blooms add architectural beauty to the garden. Sought after for bouquets and excellent in dried arrangements. Heat, drought, and salt tolerant.

H • P ✨ 🌧 24"-48" tall

#1232 \$2.29 400mg (~320 seeds)

**SHASTA DAISY***Leucanthemum x superbum*

Blooms summer.

**Alaska**

An all-time favorite flower, 'Alaska' is the hardiest of all Shasta daisies, developed by Luther Burbank in California over 100 years ago. Traditional cut flower.

H • P ✨ 24"-36" tall

#1013 \$1.99 250mg (~150 seeds)

**SNAPDRAGON***Antirrhinum majus*

Blooms heaviest in cool weather. Attracts pollinators.

**Magic Carpet Blend**

Shorter than others, this darling snapdragon blend comes in four brilliant shades for a carpet of color in the garden, container, and petite vase.

P ✨ ✨ 6"-8" tall

#1061 \$1.99 350mg (~2,520 seeds)

**Night and Day**

Velvety blossoms in glamorous contrasting colors from early summer to late fall bring the exotic to the garden. Dramatic in containers or as a cut flower.

P ✨ ✨ 18" tall

#1310 \$2.49 100mg

(~560 seeds)

**key**

✨ FULL SUN: 6-8 hours direct sun    ✨ PART SHADE: 3-6 hours direct sun    🌧 DROUGHT TOLERANT  
 A=Annual    P=Perennial    B=Biennial    T=Tender Perennial    H=Heirloom    N=Native    DR=Disease Resistance

**Tall Maximum Blend**

Tall flower spikes make exceptional cut flowers. Children through the ages have found delight in pressing the sides of the flower to open the "dragon's mouth".

H • P ✨ ✨ 30"-36" tall  
 #1035 Conventional \$1.99  
 400mg (~2,400 seeds)  
 #2061 Organic \$2.69  
 200mg (~1,280 seeds)

**STATICE**

Attracts pollinators.

**Cotton Candy Blend**

*Limonium sinuatum*  
 Blooms summer.

Delicate, papery flowers with an everlasting appeal. Grow in mass for a sweet burst of color. Long stems make for charming bouquets.

T ✨ ☹ 24"-32" tall  
 #1413 \$2.49 250mg (~70 seeds)

**Russian**

*Psylliostachys suworowii*  
 Blooms summer to fall.

These unusual, rosy flower spikes are a long-time European cut-flower favorite; an Asian wildflower that reaches out from the flower bed to amaze the onlooker.

H • A ✨ ☹ 12"-18" tall  
 #1001 \$2.49 100mg (~640 seeds)

**STOCK**

*Matthiola incana*

Blooms in cool of spring and fall.

**Column Blend**

A show-stopper of flower spikes bursting with color and fragrance with densely packed large, double blooms. A can't-miss for the cut-flower garden.

T ✨ ☹ 24"-30" tall  
 #1409 \$2.69 100mg (~44 seeds)

**STRAWFLOWER**

*Xerochrysum bracteatum*

Blooms summer to frost.

**Swiss Giants Blend**

Everlasting array of colors! Blooms that look like colored straw add interesting texture to arrangements, fresh or dried. Practically care-free!

T ✨ ☹ 36"-40" tall  
 #1414 \$1.99 100mg (~110 seeds)

**SUNFLOWER**

*Helianthus annuus* (unless noted)

Blooms summer to frost. Attracts pollinators. Edible petals.

**Drop Dead Red** (hybrid)

A florist's dream, and a gardener's delightful reality! Every multi-branching variety in this designer mix of gorgeous, long-lasting, cut-flower quality sunflowers is pollenless for spotless tabletops.

A ✨ ☹ 4'-6' tall  
 #7204 Large \$6.29 3g (~75 seeds)

**Evening Sun**

Fiery shades of vivid gold, autumn orange, warm mahogany, and blazing bronze! A dramatic cut flower and an enticing treat for birds. Multi-branching.

H • A ✨ ☹ 6'-8' tall  
 #2007 Organic \$2.29  
 500mg (~16 seeds)

**Florist's Sunny Bouquet** (hybrid)

Bring a big burst of sunshine to the garden with this blend of single and multi-branching sunny yellow, peach, and cream beauties! Florists favor these pollenless hybrids for excellent cut-flower quality, beauty, and long-lasting blooms.

A ✨ ☹ 4'-6' tall  
 #7205 Large \$6.29  
 3g (~45 seeds)

**Goldy Honey Bear**

If rays of sunshine could be captured and planted in the garden, the result would be these magnificent, multi-branching, fully double beauties! Radiant cut flower.

A ✨ ☹ 5'-6' tall  
 #2016 Organic \$3.49 25 seeds

**Heirloom Beauties**

For those who love sunflowers and cannot decide on one variety, this multi-branching mix has it all. A fabulous assortment of brilliant and warm colors!

H • A ✨ ☹ 5'-8' tall  
 #2052 Organic \$2.29  
 2g (~65 seeds)  
 #7506 Organic Large \$6.29  
 6g (~200 seeds)



**Lemon Queen**

'Lemon Queen' is so attractive to pollinators, it is the official sunflower used in the Great American Sunflower Project, a citizen study of pollinator populations. Multi-branching and radiant in bouquets.

H•A ✨ 🌱 5'-7' tall  
#2027 Organic \$2.99  
2g (~48 seeds)

**Mongolian Giant**

An enormously tall sunflower with huge flowerheads for large, delicious seeds that are perfect for roasting and snacking.

A ✨ 🌱 12'-14' tall  
#2066 Organic \$3.49  
4g (~25 seeds) **NEW**  
#7504 Organic Large \$6.29  
12g (~75 seeds)

**Rouge Royale** (hybrid)

A rich, velvety, deep-red sunflower that doesn't shed its pollen, developed for the cut-flower market. It will steal the show in gardens and bouquets. Multi-branching.

A ✨ 🌱 4'-6' tall  
#1191 \$4.29 20 seeds

**Shock-O-Lat** (hybrid)

The blazing colors of this tall, pollenless, multi-branching stunner will set gardens on fire! A shockingly beautiful, chocolate sunflower for cut flowers.

A ✨ 🌱 6' tall  
#1327 \$2.99 10 seeds

**Vanilla Ice**

*Helianthus debilis*

Vanilla cream-colored blossoms with a lemon-yellow accent set the evening garden aglow. Florist-quality cut flowers that are so easy to grow from seed! Multi-branching.

A ✨ 🌱 5' tall  
#1136 \$2.29 500mg (~75 seeds)

**Zohar** (hybrid)

A radiant flower bred for professional cut-flower growers. 'Zohar' is the quintessential sunflower without the messy pollen-drop but still plenty of nectar for pollinators. Quick to flower.

A ✨ 🌱 4'-5' tall  
#2032 Organic \$3.49 20 seeds

**Dwarf****Elves Blend**

These delightful, sparkling yellow large blooms on multi-branched short plants are ideal for containers, small gardens, small vases, and small gardeners!

A ✨ 🌱 16"-24" tall  
#2024 Organic \$2.99 1g (~48 seeds)

**Sunspot**

A big spot of sunshine on a small plant! Single blossoms up to 10" make fantastic cut flowers.

Fun for kids to grow. Eye-catching in containers.

A ✨ 🌱 18"-24" tall  
#2014 Organic \$2.69  
2g (~37 seeds)

**Teddy Bear**

Loads of fuzzy golden yellow blossoms that look like pom poms on sturdy, multi-branching, dwarf plants. Perfect height for kids to grow! Wonderful cut flower for large vases.

A ✨ 🌱 24"-36" tall  
#1038 \$2.29 1g (~47 seeds)

**MEXICAN SUNFLOWER**

*Tithonia rotundifolia*

Blooms summer to frost. Attracts pollinators.

**Torch**

Unabashedly brilliant orange and as hot and fiery as August sunshine! Easy to grow and a great cut flower. Attracts butterflies.

H•A ✨ 🌱 4'-6' tall  
#2049 Organic \$2.49  
500mg (~40 seeds)

**SWEET PEA**

*Lathyrus odoratus* (unless noted)

Blooms spring/summer (unless noted). Attracts pollinators.

**Beaujolais**

Blooms spring to fall.

A luxurious sweet pea, this highly-perfumed, Spencer-type beauty brings dramatic color and large, ruffled flowers to the garden and cut-flower bouquets.

H•A ✨ 🌱 7'-8' vines  
#1167 \$2.99 3g (~29 seeds)



**Bouquet Blend**

This captivating blend has longer, sturdier stems and larger flowers making it ideal for a big, fragrant bouquet.

A ✨ ✨ 8' vines  
#1097 \$2.99 3g (~29 seeds)

**Early Multiflora Blend**

Large, softly fragrant flowers on long stems, perfect for cut flowers. Superior for early spring bloom in mild climates, and mid-spring bloom in cold climates.

H • A ✨ ✨ 5'-6' vines  
#1040 \$3.49 3g (~26 seeds)

**Elegance Blend**

Blooms winter/spring. A lovely color combination of large sweet peas that bloom early. Superior cut flowers. Ideal blend for mild climates and greenhouses; blooms in the cool of winter.

A ✨ ✨ 5'-6' vines  
#1329 \$4.29 3g (~29 seeds)

**High Scent**

The most intensely fragrant sweet pea we could find! Perfume the garden and floral bouquets with the intoxicating aroma of these lovely ruffled blossoms.

A ✨ ✨ 6'-8' vines  
#1237 \$3.49 3g (~26 seeds)

**Knee-Hi Blend**

Fragrant blooms in a captivating array of colors on short vines. Charming in baskets, a lovely mass display in flower beds and splendid in bouquets.

A ✨ ✨ 2'-3' vines  
#1041 \$2.99 3g (~29 seeds)

**Little Sweetheart**

Charming, lightly fragrant little gems in profusion on dwarf, bush-type plants. Beautiful in hanging baskets, rambling over a stone garden wall or in a vase.

A ✨ ✨ 8"-14" vines  
#1208 \$3.49 3g (~29 seeds)

**Mammoth Blend** NEW

Large, early blooms on long stems with a subtle, sweet scent make it a florist's favorite. Heat- and drought-resistant.

A ✨ ✨ 5'-6' vines  
#2056 Organic \$4.29 2g (~24 seeds)

**My Navy** NEW

Breathe in the sweet, nostalgic scent in a rich, new color. Wavy-edged blooms on sturdy, long stems look beautiful standing alone or contrasting with lighter flowers.

A ✨ ✨ 8' vines  
#2057 Organic \$4.29 2g (~24 seeds)

**Perennial Blend**

*Lathyrus latifolius*  
Lush, rambling vines and colorful clusters of lovely white, pink, violet, and mauve flowers shine in the summer garden, even in hot, dry areas.

H • P ✨ ✨ 6'-9' vines  
#1170 \$2.99 1g (~17 seeds)

**Perfume Delight**

Let the intense fragrance of these large-flowering sweet peas with ruffled edges calm the senses and remind us of simpler times. Delicate cut flower.

H • A ✨ ✨ 5'-6' vines  
#1096 \$3.49 3g (~26 seeds)

**Royal Blend**

Sweetly scented, large blossoms in a colorful blend, including the stunning, red sweet pea. More heat tolerant than others. Beautiful cut flowers.

H • A ✨ ✨ 5'-6' vines  
#1042 \$2.99 3g (~29 seeds)

**SWEET WILLIAM**

*Dianthus barbatus*

Blooms spring to early summer. Attracts pollinators. Edible flowers.

**Double Blend**

Prized as a long-lasting cut flower, sweet William fills a flower void by blooming after spring bulbs and before summer annuals. Sweetly fragrant!

H • B ✨ ✨ 12"-20" tall  
#1087 \$1.99 750mg (~540 seeds)

**VERBASCUM | MULLEIN**

*Verbascum phoeniceum*

Blooms spring to summer.

**Shades of Summer**

Spectacular, graceful spikes flower from spring to summer, and beyond. Fast growing, fairly drought tolerant.

H • P ✨ 24"-48" tall  
#1149 \$2.29 400mg (~2,400 seeds)



key

☀️ FULL SUN: 6-8 hours direct sun    ☀️ PART SHADE: 3-6 hours direct sun    💧 DROUGHT TOLERANT  
A=Annual P=Perennial B=Biennial T=Tender Perennial H=Heirloom N=Native DR=Disease Resistance

**VERBENA***Verbena bonariensis*

Blooms summer to frost. Attracts pollinators.

**Brazilian Vervain**

Stunning plants of purple flower clusters on tall, airy branches high above the foliage. Quaint cut flower; hardy, easy to grow.

H • T ✨ ✨ ☹ 3'-4' tall

#1192 \$1.99 100mg (~320 seeds)

**VIOLA**

Edible flowers.

**Cool Summer Breeze***Viola cornuta*

Blooms heaviest in cool weather. These charming viola faces are adorable in flower pots or borders. Snip a few for petite bouquets indoors.

P ✨ ✨ 8" tall

#1344 \$2.69 200mg (~140 seeds)

**Corsican Violet***Viola corsica*

Blooms spring to fall.

A reliable, perennial viola. Enjoy delightful, blue-purple flowers with white "whiskers" year after year. A vigorous self-sower.

H • P ✨ ✨ ☹ 6"-8" tall

#1321 \$2.69 100mg (~70 seeds)

**Johnny-Jump-Up***Viola tricolor*

Blooms heaviest in cool weather.

The cheery little faces of Johnny-Jump-Up are as delightful as its name. This is one self-sower that is always welcome!

H • P ✨ ✨ 4"-12" tall

#1045 \$2.29 200mg (~240 seeds)

**King Henry***Viola cornuta*

Blooms heaviest in cool weather.

This long-time favorite sparkles with edible, velvety, violet-blue flowers to cheer up gardens and beautify sweet treats!

H • P ✨ ✨ 4"-8" tall

#1109 \$2.29 150mg (~190 seeds)

**WHEAT***Triticum* sp.

Blooms summer to frost.

**Utrecht Blue**

Bright blue seed heads keep their color even after drying, making a stunning ornamental in flower arrangements and crafts.

H • A ✨ 3'-5' tall

#2031 Organic \$2.69

5g (~100 seeds)

**YARROW***Achillea millefolium*

Blooms summer to frost. Attracts pollinators.

**Colorado Blend**

An excellent cut or dried flower, this trouble-free, hardy perennial is at home in just about any sunny spot with a bit of room to spread.

P ✨ ☹ 24" tall

#1401 \$2.29 50mg (~250 seeds)

**ZINNIA***Zinnia elegans* (unless noted)

Blooms summer to frost. Attracts pollinators.

**Benary's Giant Blend**

A backyard florist's dream, these enormous, colorful, fully double zinnias on long, sturdy stems will be the star of the garden and table top!

A ✨ 3'-4' tall

#2055 Organic \$2.69

500mg (~40 seeds)

#7507 Organic Large \$5.59

1.5g (~120 seeds)

New Large Packet

**Cactus Flower Blend**

Huge, multi-petal beauties in bold colors will be the show-offs of the garden and cut-flower arrangements. Loved by butterflies.

H • A ✨ 24"-36" tall

#1317 \$2.49 750mg

(~60 seeds)

**California Giants Blend**

Bold, beautiful, 4"-6" flowers last a very long time in the garden and vase. Superb fresh cut or dried flower!

H • A ✨ 24"-48" tall

#1047 Conventional \$2.29

1.5g (~120 seeds)

#7503 Organic Large \$5.59

2g (~240 seeds)

**key**

✨ FULL SUN: 6-8 hours direct sun   ✨ PART SHADE: 3-6 hours direct sun   ☹ DROUGHT TOLERANT  
 A=Annual   P=Perennial   B=Biennial   T=Tender Perennial   H=Heirloom   N=Native   DR=Disease Resistance

**Cut and Come Again**

Vibrant colors, too many to list! The more you cut, the more they bloom! Attracts butterflies in search of sweet summer nectar. Great cut flower.

- H • A ✨ 18"-30" tall  
 #1196 Conventional \$2.29  
 1g (~120 seeds)  
 #7202 Large \$4.59  
 4g (~480 seeds)  
 #7502 Organic Large \$5.59  
 2g (~240 seeds)

**Envy**

A rare flower color, the chartreuse blossoms are unique attention-getters. Imagine their beauty in floral arrangements!

- H • A ✨ 24"-30" tall  
 #1102 \$2.29 750mg  
 (~60 seeds)

**Fireball Blend**

Dazzling, large, red and orange blossoms are for the bold at heart! Easy to grow from seed and fabulous, long-lasting cut flowers.

- A ✨ 24"-36" tall  
 #1284 \$2.49 1g (~80 seeds)

**Giant Purple**

Huge, purple blooms on tall plants are a shock of color! These attention-getters also call in the butterflies and make show-stopping cut flowers.

- A ✨ 3'-4" tall  
 #2004 Organic \$2.99  
 500mg (~48 seeds)

**Lilliput**

Bold colors on fully double, classic zinnias with long stems on compact plants bloom prolifically through summer for loads of bright bouquets.

- A ✨ 22"-36" tall  
 #2060 Organic \$2.99  
 500mg (~70 seeds)

**Mazurkia** NEW

Fleuroselect Novelty Award-winning zinnia with bright magenta petals and white tips. Easy to grow from seed and tolerates heat.

- A ✨ 24" tall  
 #1354 \$2.99 400mg  
 (~50 seeds)

**Northern Lights Blend**

A visual feast of color in fresh shades of pink, purple, and burgundy. Impressive and long-lasting in arrangements and bouquets.

- A ✨ 24"-36" tall  
 #1293 \$2.49 1g (~80 seeds)

**Peppermint Stick**

As tantalizing as candy! Long-lasting blooms in an array of delicious colors speckled like sprinkles on a cupcake. Sweet cut flowers.

- A ✨ 24"-36" tall  
 #1187 \$2.49 600mg (~48 seeds)

**Persian Carpet**

*Zinnia haageana*  
 Warm, festive colors create a carpet of blooms in the flower bed. This Mexican zinnia blend is very heat and drought tolerant. Delightful cut flower.

- H • A ✨ 12"-16" tall  
 #1193 \$2.49 300mg (~180 seeds)

**Peruvian Blend** NEW

*Zinnia peruviana*  
 Petite, single blooms in soft red or golden yellow. Compact plants look great in containers. This Southwest species is heat and drought tolerant.

- A ✨ 24"-36" tall  
 #2065 \$2.69 300mg (~24 seeds)

**Señora** NEW

With large, lush, salmon-pink flowers with rolled petals, 'Señora' stands out in the garden and in floral designs. Zinnias stand up to heat.

- A ✨ 32"-40" tall  
 #1355 \$2.69 300mg  
 (~42 seeds)

**Thumbelina**

These charming, bright blooms on short plants deliver masses of color in the flower bed, containers, and window boxes. Perfect cut flower for petite bouquets.

- H • A ✨ 10"-16" tall  
 #1048 Conventional \$2.29  
 1g (~170 seeds)  
 #2040 Organic \$2.69  
 400mg (~85 seeds)



See back cover for details about our

# Online Partnership Program

The online-exclusive varieties in this section can now be offered to your customers, and you get the commission!



## Vegetables

### BEEF

*Beta vulgaris*  
Frost tolerant

#### Robin (hybrid)

Baby beets, uniformly round at an early state with deep red color. Great fresh, canned, or pickled. Baby leaf tops are excellent greens.

45–60 days

#0017 \$2.69 2g (~88 seeds)



### BITTER MELON

*Momordica charantia*  
Frost sensitive

#### Number One (hybrid)

Widely used in Asian cooking, enjoyed for its intriguing bitter flavor. A refreshing, cooling complement to beef, poultry, and seafood.

90 days

#0122 \$6.29 7 seeds



### CORN

*Zea mays*  
Frost sensitive

#### Flint

##### Glass Gem

Like a colorful stained-glass pane, the translucent jewel-toned kernels inspire awe in the beholder. Makes colorful popcorn!

100–110 days

#3176 Organic \$6.29

8g (~38 seeds)



### GROUND CHERRY

*Physalis pruinosa*  
Frost sensitive

#### Pineapple

With a unique flavor, both sweet and tart, these fruity little gems can be turned into jams, salsa, pies, and more.

H • 75 days from transplanting

#3164 Organic \$2.29

250mg (~100 seeds)



### KALE

*Brassica oleracea*  
Frost tolerant

#### Redbor (hybrid)

Edible and ornamental, 'Redbor' has mild flavor and vibrant foliage that changes from green to purple. Very pretty in flower beds!

21–60 days

#0225 \$6.29 25 seeds



### PEPPER

Frost sensitive

#### Chile

##### Padrón

*Capsicum annuum*

The tapas pepper of Spain. One pepper will be hot, another not! Cultivated by Spanish monks of Padrón in the 1700s.

500–2,500 SHU (Mild).

H • 60 days

from transplanting

#0281 \$2.69 20 seeds





**Scotch Bonnet***Capsicum chinense*

The intensely hot and citrus-like flavor of this pepper is a perfect match for lovers of spicy Caribbean and Latin dishes. 100,000–325,000 SHU (**Extremely hot**).

H • 75–100 days  
from transplanting  
#0075 \$4.29 20 seeds

**Sweet***Capsicum annuum***Candy Cane**

**Chocolate Cherry** NEW  
The small, crisp, sweet peppers ripen from green and white stripes to chocolate red and cream stripes. Beautiful variegated leaves make this an ideal container variety.

70–75 days  
from transplanting  
#0087 \$6.29 10 seeds

**Golden Marconi**

Taste the remarkable flavor of Italy! This traditional Italian sweet pepper is delicious green or yellow, fresh or roasted.

H • 80–90 days from  
transplanting • DR  
#0064 \$2.69 30 seeds

**RADISH***Raphanus sativus*

Frost tolerant

**Round Black Spanish**

An intriguing winter radish that all radish lovers should try. Medium-spicy, large, 3"–4" diameter, black skinned with white interior.

H • 60–70 days  
#0095 \$2.69 7g (~700 seeds)

**SPINACH***Tetragonia tetragonioides*

Frost sensitive

**New Zealand**

Discovered in New Zealand in 1770, this heat-tolerant substitute for true spinach can be enjoyed all summer long!

H • 50–60 days  
#0159 2.49 4g (~65 seeds)

**SQUASH Winter***Cucurbita pepo*

Frost sensitive

**Angel Hair** (hybrid)

"Spaghetti" for one! Cute, little squash make a great single-serving presentation. Expect an abundant harvest of this long-storing crop.

88 days  
#0019 \$5.59 10 seeds

**TOMATO***Solanum lycopersicum* (unless noted)

Frost sensitive

**Bush****Mountain Merit** (hybrid) NEW

This award-winning slicing tomato is firm with excellent flavor and good disease resistance. The compact plants are perfect for containers.

Det. • 75 days  
from transplanting • DR  
#0107 \$6.29 10 seeds

**Pole****Cherokee Carbon** (hybrid) NEW

This cross of two purple, full-flavor, heirloom favorites marries great taste with earlier, improved yield and reduced imperfections.

Ind. • 75–80 days  
from transplanting  
#0096 \$6.29 10 seeds

**Pole, Cherry****Artisan Tiger Stripes Blend**

Pounce on this blend of sweet, striped tomatoes! Eye-catching, elongated shape adds a refreshing look to any dish. Three colors in one packet! Crack resistant.

Ind. • 70 days  
from transplanting  
#3168 Organic \$3.49 15 seeds

**Chocolate Sprinkles** (hybrid) NEW

Beautiful and sweet with incredible flavor, this tomato offers a high yield and disease resistance. Deep-red, large, elongated, cherry tomatoes with green and brown striping.

Ind. • 50–55 days from  
transplanting • DR  
#0097 \$6.29 10 seeds

**key**

H=Heirloom

DR=Disease Resistance

ID=Intermediate Day (onion)

Det.=Determinate (tomato)

N=Native

LD=Long Day (onion)

SD=Short Day (onion)

Semi-det.=Semi-determinate (tomato)

**Indigo Rose**

*Solanum lycopersicum* (PVP)  
Dark, delicious, and highly nutritious! 'Indigo Rose' was bred for its anthocyanin content, but also delivers beauty and flavor.  
Semi-Det. • 80–90 days from transplanting • DR  
#3155 Organic \$4.29 10 seeds

**Rootstock**

**Fortamino** (hybrid) **NEW**  
This strong rootstock tomato can be grafted to a favored tomato for all of the flavor with added hardiness and fruit production. Impressive benefits even in hot conditions.  
5–10 days  
#3162 Organic \$1.99  
10 seeds



# Flowers

**BLACK-EYED SUSAN VINE**

*Thunbergia alata*

Blooms summer to frost.

**Spanish Eyes**

Sunset-colored flowers accented with a dark center eye on flourishing vines are charming in hanging baskets. Very fast growing.  
A ✨ ✨ 5'–8' vines  
#1182 \$4.29 15 seeds

**CAPE DAISY**

*Arctotis fastuosa*

Blooms summer to frost. Attracts pollinators.

**Zulu Prince**

This noble, South African native flower is perfect for hot, dry, sunny spots, and creates a carpet of bright, cheery flowers.  
A ✨ ☹️ 24" tall  
#1057 \$2.29 100mg  
(~200 seeds)

**CORN Ornamental****Striped Japonica**

Variiegated leaves add brilliant color and novelty to the flower or vegetable garden. The jewel-like, dark burgundy cobs make gorgeous autumn décor. Burgundy kernels can be ground into cornmeal!  
H • A ✨ 5'–6' tall  
85 days  
#2038 Organic \$3.49  
5g (~22 seeds)

**DUSTY MILLER**

*Jacobaea maritima*

**Silverdust**

Indispensable for flowerbeds and containers, 'Silverdust's' silvery foliage is the ideal backdrop to make jewel tone flowers pop! Great filler for bouquets.  
T ✨ ✨ 10"–12" tall  
#1301 \$2.69 75mg  
(~190 seeds)

**ECHINACEA**

*Echinacea purpurea*

Blooms summer to frost. Attracts pollinators.

**Paradiso Dwarf Blend**

This compact, first-year flowering echinacea blend blooms in an array of colors. Add long-lasting color to the garden or a bouquet.  
P ✨ ✨ ☹️ 18"–22" tall  
#1318 \$4.29 15 seeds

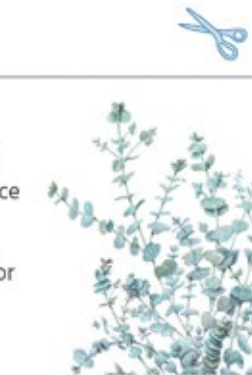
**EUCALYPTUS**

*Eucalyptus pulverulenta*

Blooms fall.

**Baby Blue**

Bouquets come alive with classic eucalyptus fragrance and frosty blue-green, rounded leaves on long, full stems. Also fabulous for crafts. Heat tolerant.  
T ✨ ☹️ 24"–42" tall  
#1345 \$6.29 20 seeds

**key**

☀️ FULL SUN: 6–8 hours direct sun ✨ PART SHADE: 3–6 hours direct sun ☹️ DROUGHT TOLERANT  
A=Annual P=Perennial B=Biennial T=Tender Perennial H=Heirloom N=Native DR=Disease Resistance

## MILKWEED BUTTERFLY FLOWER

*Oxypetalum coeruleum*

Blooms summer. Attracts pollinators.

### **Tweedia**

A unique milkweed, with aquamarine flowers and first year blooms to make pollinators swoon and bouquets bright.

T ✨ ✨ 28"-10' semi-vining  
#1342 \$5.59 15 seeds



## MILLET Ornamental

*Cenchrus americanus*

Blooms summer to frost.

### **Purple Majesty** (hybrid)

Create interest with these towers of deep purple stems layered with lush, grassy leaves and fuzzy flower spikes. Intriguing in bouquets. All-America Selections winner.

A ✨ ☹ 3'-5" tall  
#1248 \$6.29 20 seeds



## NASTURTIUM

*Tropaeolum majus*

Blooms late spring to frost. Attracts pollinators. Edible flowers.

### **Mahogany**

Glorious, deep red blossoms float atop the contrasting, bright-green foliage. Edible flowers are lovely on salads!

A ✨ ✨ ☹ 10"-12" tall  
#1194 \$2.49 2g (~14 seeds)



## PEPPER Ornamental

*Capsicum annuum*

### **Black Pearl**

Add unending interest to the garden and cut-flower arrangements with shiny, black, pearl-like peppers and near-black leaves. All-America Selections award winner.

A ✨ 90 days from transplanting  
#1262 \$6.29 10 seeds



## PETUNIA

*Petunia x atkinsiana*

Blooms spring to frost. Attracts pollinators.

### **Garden Party Blend** (hybrid)

Dressed in unending shades of pink and ready to party, these large petunias have the flower power to bring gardens and containers to life!

A ✨ 10"-15" tall  
#1348 \$2.99 25 seeds



### **Shock Wave**<sup>®</sup>

### **Purple Tie Dye** (hybrid)

This low-growing, petite petunia is shockingly stunning, fantastically floriferous, and a cute container contender.

A ✨ 7"-10" tall  
#1347 \$4.29 10 seeds



## PUMPKIN ON A STICK

*Solanum aethiopicum*

This captivating plant bears clusters of miniature "pumpkins." Distinctive addition to fall displays; used by the pros in the cut-flower market!

H • A ✨ 65-70 days from transplanting  
#2025 Organic \$4.29 25 seeds



## SWEET ANNIE

*Artemisia annua*

Blooms summer to fall. Attracts pollinators.

Old-fashioned, highly aromatic and popular for wreaths, potpourris, herbal crafts, and floral filler. Fast growing.

H • A ✨ 4'-6" tall  
#2010 Organic \$2.69 300mg (~6,000 seeds)



## ZINNIA

*Zinnia elegans*

Blooms summer to frost. Attracts pollinators.

### **Queen Lime Orange**

The citrusy sherbet shades in this royal, double zinnia are like no other. Extraordinary large blossoms for gorgeous bouquets.

A ✨ 30"-40" tall  
#1079 \$6.29 20 seeds



# Online Partnership Program

Offer Botanical Interests' entire line of seeds and products from your website, newsletter, or social media and earn a **35%** commission.

We provide promotional materials for your store!

Program ads on your website



Ads on your social media



We inspire and educate the gardener within.™

Botanical  
INTERESTS®

1-800-486-2647

general.sales@botanicalinterests.com

botanicalinterests.com

660 Compton Street, Broomfield, CO 80020